

**modu  
lyss®**

GLEAM 511, 535, 569, 581 & SPARK 511, 550

# 52

---

## GLEAM

---

175



LRV 4 L 23

346



LRV 7 L 32

306



LRV 13 L 43

212



LRV 9 L 35

615



LRV 17 L 48

535



LRV 13 L 42

579



LRV 5 L 24

482



LRV 6 L 29

866



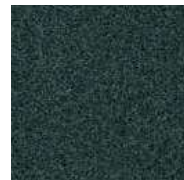
LRV 11 L 39

606



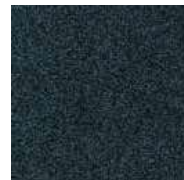
LRV 10 L 37

609



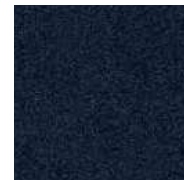
LRV 9 L 36

511



LRV 8 L 32

569



LRV 3 L 17

581



LRV 10 L 37

462



LRV 8 L 34

826



LRV 13 L 43

894



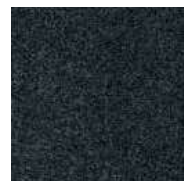
LRV 15 L 45

847



LRV 10 L 37

994



LRV 8 L 33

530



LRV 2 L 13

990



LRV 11 L 40

314



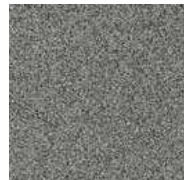
LRV 12 L 41

398



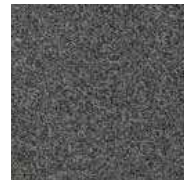
LRV 21 L 53

033



LRV 22 L 54

020



LRV 15 L 46

907



LRV 8 L 33

989



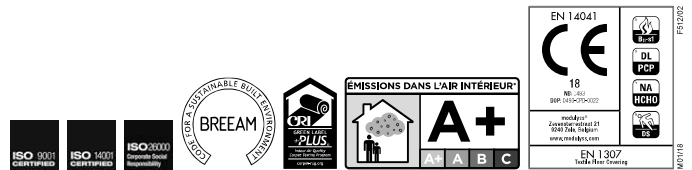
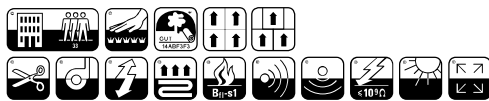
LRV 5 L 25

966

# GLEAM

## 176 Technical datasheet

<b>CONSTRUCTION</b>	Tufted 1/10° Cutpile Frisé	<b>FIRE RESISTANCE</b>	EN 13501-1: B <sub>s</sub> -s1
<b>PILE MATERIAL</b>	ECONYL <sup>®</sup> yarn, 100 % Regenerated Solution Dyed Nylon + PA 6	<b>FASTNESS TO LIGHT</b>	ISO 105-B02 ≥ 5
<b>SECONDARY BACKING</b>	Back2Back: Modified bitumen enhanced with a thermoplastic elastomer, reinforced with a glass fibre fleece covered with 100% PES fleece 10% recycled content included.	<b>RUBBING FASTNESS</b>	EN ISO 105-X12 ≥ 4
<b>TOTAL WEIGHT</b>	Ca. 5 150 g/m <sup>2</sup>	<b>COLOUR FASTNESS TO WATER</b>	EN ISO 105-E01 ≥ 4
<b>PILE WEIGHT</b>	Ca. 1 300 g/m <sup>2</sup>	<b>THERMAL RESISTANCE</b>	ISO 8302 0,107 m <sup>2</sup> K/W
<b>PILE ABOVE BACKING</b>	Ca. 1 045 g/m <sup>2</sup>	<b>IMPACT NOISE RATING</b>	ISO 10140 ΔL <sub>w</sub> : 51 dB (1 000 Hz) ΔL <sub>w</sub> : 31 dB
<b>TOTAL HEIGHT</b>	Ca. 9,5 mm	<b>SOUND ABSORPTION</b>	ISO 354 α <sub>w</sub> : 0,20 Hz 125 250 500 1000 2000 4000 α <sub>s</sub> 0,00 0,03 0,12 0,23 0,44 0,57
<b>PILE HEIGHT</b>	Ca. 6,2 mm	<b>PERMANENT ANTISTATIC</b>	ISO 6356 ≤ 2 kV
<b>PILE DENSITY</b>	Ca. 0,169 g/cm <sup>3</sup>	<b>TRANSVERSAL RESISTANCE</b>	ISO/DIS 10965 ≤ 1 x 10 <sup>4</sup> Ohm
<b>TUFT DENSITY</b>	Ca. 164 000 /m <sup>2</sup>	<b>SIZE &amp; PACKING</b>	50 cm x 50 cm box: 4 m <sup>2</sup> pallet: 20 boxes
<b>CLASSIFICATION</b>	EN 1307 33 - LC5	<b>NUMBER OF COLOURS</b>	27, Special colours possible
<b>CASTOR CHAIR SUITABILITY</b>	EN 985 A: continuous use	<b>DIMENSIONAL STABILITY</b>	EN 986 Max. 0,2%
<b>DONNÉES ENVIRONNEMENTALES</b>	Démarche HQE <sup>®</sup> : cf. FDES suivant NF P01-010 Déclaration du 30/07/2003	<b>GUT-NR</b>	14ABF3F3
		<b>LEED<sup>®</sup></b>	Product contributes toward satisfying Credits under LEED <sup>®</sup> . For more information, see the modulys sustainable datasheets.



EN 1307  
Modulys Green

## Sustainable datasheet

### 1. RECYCLED CONTENT

- 46% Overall recycled content.
- Yarn**  
100% ECONYL® yarn - 100% Regenerated Solution Dyed Nylon + PA 6 ECONYL® is manufactured using post-industrial and post-consumer Polyamide 6 waste, making it 100% sustainable.
- Primary Backing**  
Colback SMR is produced out 100% post-consumer recycled PET, originated from bottle scrap.
- Secondary Backing – back2back**  
The waste from the tile cutting process is shredded and added to the secondary backing, giving it a 10% post-industrial recycled content.
- Recycled limestone in the backing**  
The filler used for the production of our carpet tiles is 100% post-industrial recycled, diverted from a waste stream of the limestone mining.

### 2. MANUFACTURING

- Renewable energy**  
49% of our energy consumption is electricity. The electricity that we use at modulyss is 100% 'green electricity' generated from renewable resources such as our own solar panels.
- Production site & process**  
modulyss runs an integrated production chain: from tufting to the packaging of the finished tile.  
**ISO certification**  
Our production site is ISO-9001 certified (Quality Management) since 2000 and ISO-14001 certified (Environmental Management) since 2009, modulyss also works in accordance with ISO26000 and publishes a Corporate Social Responsibility report in line with the guidelines of the Global Reporting Initiative (GRI), the international standard for sustainability reporting, and the UN's Sustainable Development Goals (SDGs).  
**Recycling raw yarns**  
All the left over and waste yarns are collected and recycled into new yarns.  
**Ecological Packaging**  
We only use cardboard boxes that are made of 100% recycled material.
- Sustainability report**  
Read all about our approach to the environment in our sustainability report 2016: <http://www.modulyss.com/ebook/mvo/>.

### 3. INSTALLATION

- Adhesive**  
modulyss® advises to use a solvent-free, easy release system with very low emissions.
- Installation waste**  
In a rectangular building, installed before walls, using our installation descriptions the waste for Carpet tiles is 3-4%. In comparison for broadloom the waste during installation rises till ± 10%. More information can be found in our installation instructions.

### 4. END OF LIFE

- Re-use**  
At the end of life, after cleaning, carpet tiles can be re-used in non-critical areas, to extend the product life.
- Recycling**  
Carpet tiles can be used as raw material for the backing of new carpet tiles in our back2back program.
- CARE**  
Partnership modulyss®/Vanheede Environment Group in which carpet tiles are converted into secondary fuel to reduce CO<sub>2</sub> emissions significantly. The minerals are extracted from the carpet tiles and recycled into raw material for the cement production industry, which results in ± 50% recycling of our carpet tiles.

### 5. VOC'S & CHEMICAL SUBSTANCES

This product fulfills the testing criteria for emissions of:

- CRI (US and international)**  
Carpet & Rug Institute  
Compliant to the requirements of Green Label Plus certificate GLP 1101 (see LEED®, point 7.b).
- GUT (DE)**  
Gemeinschaft Umweltfreundlicher Teppichboden  
TVOC28<100 µg/m³  
This product meets the GUT-criteria, GUT-license number 14ABF3F3. These criteria include VOC thresholds, odour and chemical substances.
- REACH (EU)**  
modulyss® complies with the strict European REACH standards.
- Sundahus (SE)**  
Sundahus Miljødata is a system of health and environmental assessment of products in the construction and real estate businesses. The core of the system is a database of substances, materials and products, B-rating.

### 6. ENVIRONMENTAL PRODUCT DECLARATION (EPD)

An EPD is a standardised way to provide information on the environmental impact of a product during the entire life. They include information on the environmental impact of raw material extraction and production, energy use and efficiency, content of materials and chemical substances, emissions to air, soil and water and waste generation. A product-specific EPD in accordance with the ISO14025 and EN15804, is available for this product. The EPD-declaration-number is EPD-MOD-20170095-CBC1-EN.

### 7. COMPLIANCE TO GREEN BUILDING CERTIFICATIONS

- BRE Global (UK)**  
Building Research Establishment.  
This product can contribute towards credits in:  
**Ha02 – Indoor Air Quality**  
To recognise and encourage a healthy internal environment through the specification and installation of appropriate ventilation, equipment and finishes.  
■ Use of a low-emission adhesive on installation (EN EN 13959-1:2007) can contribute to this credit.  
■ modulyss® carpet tiles meet the requirements of EN14041, including E1 classification for formaldehyde emissions, and can contribute to the credit for healthy indoor air quality.  
**Ha05 – Acoustic performance**  
To ensure the buildings' acoustic performance including sound insulation meet the appropriate standards for its purpose. This product is highly sound-absorbent. It reduces contact noise by 31 decibels (ΔL<sub>w</sub> - ISO 10140) and has an absorption coefficient of 0,20 (ISO 354).  
**MAT 1 – Life Cycle Impact**  
All modulyss® products are rated for offices according to BRE Green Guide to Specification. The BRE Global Environmental Profile Certification Scheme requires evidence of a minimum of 6 months continuous production prior to a request for certification and the certification process takes approximately 6 months to complete. As a result, we are currently not able to provide a BRE Global Environmental Profile Certificate for Gleam but please note that a similar product is A-rated for offices.  
**MAT 5 – Designing for Robustness**  
To recognise and encourage adequate protection of exposed elements of the building and landscape, therefore minimising the frequency of replacement and maximising materials optimisation. This product satisfies the requirements of EN1307 classification, class 33 - LC5 for intensive use in a contract environment.

- LEED® (US and international)**  
Leadership in Energy and Environmental Design  
modulyss products can contribute to the following LEED v4 credits:

MR credit: Interiors Life-Cycle Impact Reduction.  
MR credit: Building product disclosure and optimization - Environmental Product Declarations.  
MR credit: Building product disclosure and optimization - Sourcing of raw materials.  
MR4 Post-Industrial recycled content: 45%.  
MR4 Post-Consumer recycled content: 2%.  
MR credit: Building product disclosure and optimization - Material ingredients.  
MR credit: Construction and demolition waste management.  
EQ credit: Low emitting materials.  
EQ credit: Indoor air quality assessment.  
EQ credit: Acoustic performance.

Products are not reviewed under LEED. LEED credit requirements cover the performance of materials in aggregate, not the performance of individual products of brands. For more information on LEED, visit [www.usgbc.org/contact](http://www.usgbc.org/contact).

- HQE (FR)**  
Haute Qualité Environnementale  
In 2005 modulyss® was awarded the HQE certificate by FDES in accordance with NF P01 010. This product can contribute to eight of the 13 HQE targets as follows:

Eco-Construction	MOQUETTES FDES
Integrated choice of products and construction materials	T2
Low site nuisance	T3
Comfort	MOQUETTES FDES
Thygrothermal comfort	T8
Acoustic comfort	T9
Visual comfort	T10
No unpleasant smells	T11
Health	MOQUETTES FDES
Sanitary quality of areas	T12
Sanitary air quality	T13

- Good Environmental Choice Australia (GECA) (AU)**  
Australia's only independent, not-for-profit, multi-sector ecolabelling program. Certification program that assesses and certifies products and services that have a lower impact on the environment and human health and address important social considerations.

### 8. HEALTH & COMFORT

- Solvent-free Bitume**  
For the bitumebacking we only use bitumen that is not oxidised and is solvent-free.
- No heavy metals**  
modulyss® carpet tiles are free of heavy metals and other harmful substances, such as lead, mercury or chromium.
- Odour**  
modulyss® carpet tiles are free from odours (see GUT certification program).
- Acoustics**  
This product is strongly sound absorbent. It reduces the contact noise by 31 decibels (ΔL<sub>w</sub> - ISO 10140), with a perfect acoustic effect as result.

### 9. MEMBER OF HEALTHY SEAS®

As part of our sustainable mission to reduce the Life Cycle Impact of each product, modulyss decided to join Healthy Seas® as an associate partner member. Healthy Seas® was set up to protect our seas by diving for abandoned fishing nets that catch or injure marine life. Healthy Seas® makes sure that the fishing nets get recycled and regenerated into ECONYL® yarn by Aquafil, Europe's premier manufacturer of PA 6 carpet fibre.