



**modu
lyss**

MILLENNIUM NXTGEN 915, 918, 989

03

MILLENNIUM NXTGEN



LRV 5 L 24 310



LRV 13 L 42 907



LRV 3 L 18 550



LRV 10 L 38 626*



LRV 12 L 41 669



LRV 6 L 27 411



LRV 7 L 31 883*



LRV 4 L 21 965



LRV 19 L 50 915



LRV 11 L 39 505



LRV 8 L 34 695



LRV 17 L 48 210*



LRV 4 L 23 462



LRV 18 L 49 817



LRV 6 L 27 993



LRV 15 L 45 942*



LRV 9 L 35 555



LRV 5 L 26 684



LRV 28 L 60 200



LRV 5 L 25 352*



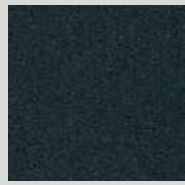
LRV 13 L 43 847



LRV 8 L 33 918



LRV 21 L 53 957



LRV 5 L 26 573*



LRV 7 L 30 511*



LRV 18 L 49 322



LRV 8 L 34 125*



LRV 15 L 46 140



LRV 11 L 40 989



LRV 9 L 35 579*



LRV 5 L 24 524



LRV 16 L 47 900*



LRV 6 L 28 355



LRV 8 L 34 323*



LRV 23 L 55 061



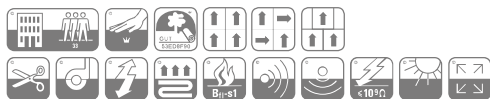
LRV 25 L 57 102*

* Colours available as from 600 m²

MILLENNIUM NXTGEN

12 Technical datasheet

CONSTRUCTION	Tufted 1/10" Loop	FIRE RESISTANCE	EN 13501-1 B ₁ -s1
PILE MATERIAL	100% ECONYL® yarn 100% Regenerated Solution Dyed Nylon	FASTNESS TO LIGHT	ISO 105-B02 ≥ 7
SECONDARY BACKING	Back2Back: Modified bitumen enhanced with a thermoplastic elastomer, reinforced with a glass fibre fleece covered with 100% PES fleece. 10% recycled content included.	RUBBING FASTNESS	EN ISO 105-X12 ≥ 4
TOTAL WEIGHT	Ca. 4 400 g/m ²	COLOUR FASTNESS TO WATER	EN ISO 105-E01 ≥ 4
PILE WEIGHT	Ca. 600 g/m ²	THERMAL RESISTANCE	ISO 8302 0,066 m ² K/W
PILE ABOVE BACKING	Ca. 395 g/m ²	IMPACT NOISE RATING	ISO 10140 ΔL _w : 25 dB
TOTAL HEIGHT	Ca. 6,3 mm	SOUND ABSORPTION	ISO 354 α _w : 0,15 Hz 125 250 500 1000 2000 4000 α _s 0,00 0,00 0,06 0,14 0,31 0,39
PILE HEIGHT	Ca. 3,2 mm	PERMANENT ANTISTATIC	ISO 6356 ≤ 2 kV
PILE DENSITY	Ca. 0,123 g/cm ³	TRANSVERSAL RESISTANCE	ISO/DIS 10965 ≤ 1 x 10 ⁷ Ohm
TUFT DENSITY	Ca. 160 000 /m ²	SIZE & PACKING	50 cm x 50 cm box: 5 m ² pallet: 20 boxes
CLASSIFICATION	EN 1307 33 - LC1	NUMBER OF COLOURS	36
CASTOR CHAIR SUITABILITY	EN 985 A: continuous use	DIMENSIONAL STABILITY	EN 986 Max. 0,2%
DONNÉES ENVIRONNEMENTALES	Démarche HQE®: cf. FDES suivant NF P01-010 Déclaration du 30/07/2003	GUT-NR	53ED8F90
		LEED®	Product contributes toward satisfying Credits under LEED®. For more information, see the modulys sustainable datasheets.



Sustainable datasheet

1. RECYCLED CONTENT

- a. 64% Overall recycled content.
- b. **Yarn**
100% ECONYL® yarn - 100% Regenerated Solution Dyed Nylon. ECONYL® is manufactured using post-industrial and post-consumer Polyamide 6 waste, making it 100% sustainable.
- c. **Secondary Backing – back2back**
The waste from the tile cutting process is shredded and added to the secondary backing, giving it a 10% post-industrial recycled content.
- d. **Recycled limestone in the backing**
The filler used for the production of our carpet tiles is 100% post-industrial recycled, diverted from a waste stream of the limestone mining.

2. MANUFACTURING

- a. **Renewable energy**
49% of our energy consumption is electricity. The electricity that we use at modulyss is 100% 'green electricity' generated from renewable resources such as our own solar panels.
- b. **Production site & process**
modulyss runs an integrated production chain: from tufting to the packaging of the finished tile.
ISO certification
Our production site is ISO-9001 certified (Quality Management) since 2000 and ISO-14001 certified (Environmental Management) since 2009. modulyss also works in accordance with ISO26000 and publishes a Corporate Social Responsibility report in line with the guidelines of the Global Reporting Initiative (GRI), the international standard for sustainability reporting, and the UN's Sustainable Development Goals (SDGs).
Recycling raw yarns
All the left over and waste yarns are collected and recycled into new yarns.
Ecological Packaging
We only use cardboard boxes that are made of 100% recycled material.
- c. **Sustainability report**
Read all about our approach to the environment in our sustainability report 2016. <http://www.modulyss.com/ebook/mvo/>.

3. INSTALLATION

- a. **Adhesive**
modulyss® advises to use a solvent-free, easy release system with very low emissions.
- b. **Installation waste**
In a rectangular building, installed before walls, using our installation descriptions the waste for carpet tiles is 3-4%. In comparison for broadloom the waste during installation rises to ± 10%. More information can be found in our installation instructions.

4. END OF LIFE

- a. **Re-use**
At the end of life, after cleaning, carpet tiles can be re-used in non-critical areas, to extend the product life.
- b. **Recycling**
Carpet tiles can be used as raw material for the backing of new carpet tiles in our back2back program.
- c. **CARE**
Partnership modulyss®/Vanheede Environment Group in which carpet tiles are converted into secondary fuel to reduce CO₂ emissions significantly. The minerals are extracted from the carpet tiles and recycled into raw material for the cement production industry, which results in ± 50% recycling of our carpet tiles.

5. VOC'S & CHEMICAL SUBSTANCES

- This product fulfills the testing criteria for emissions of:
- a. **CRI (US and international)**
Carpet & Rug Institute
Compliant to the requirements of Green Label Plus, GLP 1100 (see LEED®, point 7.b)
 - b. **GUT (DE)**
Gemeinschaft Umweltfreundlicher Teppichboden
TVOC28<100 µg/m³
This product meets the GUT-criteria, GUT-license number 53ED8F90. These criteria include VOC thresholds, odour and chemical substances.
 - c. **REACH (EU)**
modulyss® complies with the strict European REACH standards.
 - d. **Sundahus (SE)**
Sundahus Miljødata is a system of health and environmental assessment of products in the construction and real estate businesses. The core of the system is a database of substances, materials and products, B-rating.
 - e. **M1 (FI)**
This certificate is granted by the Building Information Foundation RTS sr. The aim of the classification is to enhance the development and the use of low-emitting building materials to create a healthy indoor environment.

6. ENVIRONMENTAL PRODUCT DECLARATION (EPD)

An EPD is a standardised way to provide information on the environmental impact of a product during the entire life. They include information on the environmental impact of raw material extraction and production, energy use and efficiency, content of materials and chemical substances, emissions to air, soil and water and waste generation. A product-specific EPD in accordance with the ISO14025 and EN15804, is available for this product. The EPD-declaration-number is EPD-MOD-20150329-CBC1-EN.

7. COMPLIANCE TO GREEN BUILDING CERTIFICATIONS

- a. **BRE Global (UK)**
Building Research Establishment.
This product can contribute towards credits in:
Ha 02 – Indoor Air Quality
To recognise and encourage a healthy internal environment through the specification and installation of appropriate ventilation, equipment and finishes.
■ Use of a low-emission adhesive on installation (BNI 13669-1-2007) can contribute to this credit.
■ modulyss® carpet tiles meet the requirements of EN14041, including E1 classification for formaldehyde emissions, and can contribute to the credit for healthy internal air quality.
Ha 05 – Acoustic performance
To ensure the building's acoustic performance including sound insulation meet the appropriate standards for its purpose. This product is highly sound-absorbent. It reduces contact noise by 25 decibels (ΔL_w - ISO 10140) and has an absorption coefficient of 0,15 (ISO 354).
MAT 1 – Life Cycle Impact
BREEAM Rating Offices
All modulyss® products are rated for offices according to BRE Green Guide to Specification. The BRE Global Environmental Profiles Certification Scheme requires evidence of a minimum of 6 months continuous production prior to a request for certification and the certification process takes approximately 6 months to complete. As a result, we are currently not able to provide a BRE Global Environmental Profile Certificate for Millennium Nextgen but please note that a similar product has obtained an Ecopoint score of 0,26 and is a "A"-rated for offices.
MAT 5 – Designing for Robustness
To recognise and encourage adequate protection of exposed elements of the building and landscape, therefore minimising the frequency of replacement and maximising materials optimisation. This product satisfies the requirements of EN1507 classification, class 33 - LC1 for intensive use in a contract environment.
WST 01 – Construction Waste Management
To promote resource efficiency via the effective management and reduction of construction waste. This product can contribute to waste reduction on site. See item 3, installation, for more details. Concerns cutting waste on installation of carpet tiles.

b. LEED® (US and international)

- Leadership in Energy and Environmental Design modulyss products can contribute to the following LEED® v4 credits:
- MR credit: Interiors Life-Cycle Impact Reduction.**
MR credit: Building product disclosure and optimisation - Environmental Product Declarations.
MR credit: Building product disclosure and optimisation - Sourcing of raw materials. MR4 Post-Industrial recycled content: 57%, MR4 Post-Consumer recycled content: 7%.
- MR credit: Building product disclosure and optimisation - Material ingredients.**
MR credit: Construction and demolition waste management.
EQ credit: Low emitting materials.
EQ credit: Indoor air quality assessment.
EQ credit: Acoustic performance.
- Products are not reviewed under LEED®, LEED® credit requirements cover the performance of materials in aggregate, not the performance of individual products of brands. For more information on LEED®, visit www.usgbc.org/contact.
- c. **HQE (FR)**
Haute Qualité Environnementale
In 2005 modulyss® was awarded the HQE certificate by FDES in accordance with NF P01 010. This product can contribute to eight of the 13 HQE targets as follows:

Eco-Construction	MOQUETTES FDES
Integrated choice of products and construction materials	T2
Low site nuisance	T3
Comfort	MOQUETTES FDES
Hygothermal comfort	T8
Acoustic comfort	T9
Visual comfort	T10
No unpleasant smells	T11
Health	MOQUETTES FDES
Sanitary quality of areas	T12
Sanitary air quality	T13

8. HEALTH & COMFORT

- a. **Solvent-free Bitume**
For the bitumebacking we only use bitumen that is not oxidised and is solvent-free.
- b. **No heavy metals**
modulyss® carpet tiles are free of heavy metals and other harmful substances, such as lead, mercury or chromium.
- c. **Odour**
modulyss® carpet tiles are free from odours, (see GUT certification program)
- d. **Acoustics**
This product is strongly sound absorbent. It reduces the contact noise by 25 decibels (ΔL_w - ISO 10140), with a perfect acoustic effect as result.

9. MEMBER OF HEALTHY SEAS®

As part of our sustainable mission to reduce the Life Cycle Impact of each product, modulyss decided to join Healthy Seas® as an associate partner member. Healthy Seas® was set up to protect our seas by diving for abandoned fishing nets that catch or injure marine life. Healthy Seas® makes sure that the fishing nets get recycled and regenerated into ECONYL® yarn by Aquafil, Europe's premier manufacturer of PA 6 carpet fibre.