

114



**modu
lyss®**

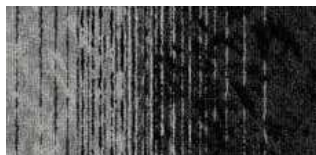
VISION 316, MOTION 315, VISION 914, MOTION 957, VISION 957

34

MOTION /// VISION



LRV 23 L 55 VISION 914



LRV 12 L 37 MOTION 991



LRV 4 L 21 VISION 991



LRV 23 L 55 VISION 914



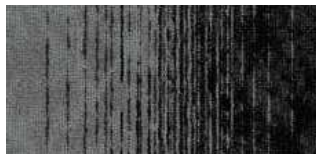
LRV 28 L 60 MOTION 210



LRV 26 L 58 VISION 210



LRV 15 L 45 VISION 957



LRV 9 L 33 MOTION 961



LRV 4 L 21 VISION 991



LRV 23 L 55 VISION 914



LRV 20 L 52 MOTION 669



LRV 16 L 47 VISION 669



LRV 6 L 27 VISION 550



LRV 5 L 23 MOTION 550



LRV 4 L 21 VISION 991



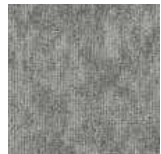
LRV 23 L 55 VISION 914



LRV 13 L 40 MOTION 511



LRV 6 L 27 VISION 511



LRV 23 L 55 VISION 914



LRV 15 L 44 MOTION 332



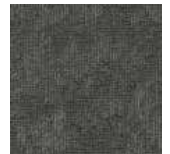
LRV 8 L 32 VISION 332



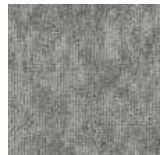
LRV 30 L 62 VISION 130



LRV 20 L 51 MOTION 847



LRV 11 L 38 VISION 847



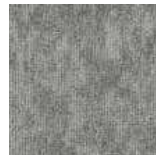
LRV 23 L 55 VISION 914



LRV 14 L 42 MOTION 410



LRV 7 L 30 VISION 410



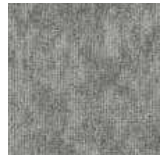
LRV 23 L 55 VISION 914



LRV 17 L 48 MOTION 315



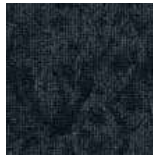
LRV 14 L 44 VISION 315



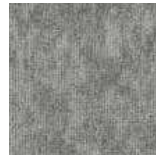
LRV 23 L 55 VISION 914



LRV 12 L 38 MOTION 578



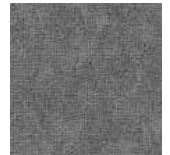
LRV 5 L 25 VISION 578



LRV 23 L 55 VISION 914



LRV 19 L 50 MOTION 957

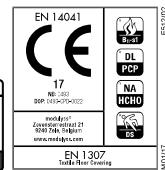
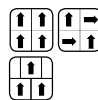
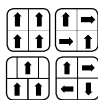


LRV 15 L 45 VISION 957

MOTION /// VISION

116 Technical datasheet

	MOTION	VISION		MOTION	VISION
CONSTRUCTION	Tufted 1/12' Loop	Tufted 1/12' Loop	FIRE RESISTANCE	EN 13501-1 B _{fl} -s1	EN 13501-1 B _{fl} -s1
PILE MATERIAL	100% PA 6 Solution Dyed Nylon	100% PA 6 Solution Dyed Nylon	FASTNESS TO LIGHT	ISO 105-B02 ≥ 7	ISO 105-B02 ≥ 7
SECONDARY BACKING	Back2Back: Modified bitumen enhanced with a thermoplastic elastomer, reinforced with a glass fibre fleece covered with 100% PES fleece 10% recycled content included.	Back2Back: Modified bitumen enhanced with a thermoplastic elastomer, reinforced with a glass fibre fleece covered with 100% PES fleece 10% recycled content included.	RUBBING FASTNESS	EN ISO 105-X12 ≥ 4	EN ISO 105-X12 ≥ 4
TOTAL WEIGHT	Ca. 4 600 g/m ²	Ca. 4 600 g/m ²	COLOUR FASTNESS TO WATER	EN ISO 105-E01 ≥ 4	EN ISO 105-E01 ≥ 4
PILE WEIGHT	Ca. 680 g/m ²	Ca. 680 g/m ²	THERMAL RESISTANCE	ISO 8302 0,091 m ² K/W	ISO 8302 0,091 m ² K/W
PILE ABOVE BACKING	Ca. 410 g/m ²	Ca. 410 g/m ²	IMPACT NOISE RATING	ISO 10140 ΔL _w : 26 dB	ISO 10140 ΔL _w : 27 dB
TOTAL HEIGHT	Ca. 7,7 mm	Ca. 7,7 mm	SOUND ABSORPTION	ISO 354 α _w : 0,20 Hz 125 250 500 1000 2000 4000 α _w 0,04 0,00 0,13 0,20 0,36 0,40	ISO 354 α _w : 0,20 Hz 125 250 500 1000 2000 4000 α _w 0,03 0,00 0,10 0,19 0,36 0,42
PILE HEIGHT	Ca. 3,7 mm	Ca. 3,7 mm	PERMANENT ANTISTATIC	ISO 6356 ≤ 2 kV	ISO 6356 ≤ 2 kV
PILE DENSITY	Ca. 0,110 g/cm ³	Ca. 0,110 g/cm ³	TRANSVERSAL RESISTANCE	ISO/DIS 10965 ≤ 1 x 10 ⁸ Ohm	ISO/DIS 10965 ≤ 1 x 10 ⁸ Ohm
TUFT DENSITY	Ca. 197 500 /m ²	Ca. 197 500 /m ²	SIZE & PACKING	50 cm x 50 cm box: 5 m ² pallet: 20 boxes	50 cm x 50 cm box: 5 m ² pallet: 20 boxes
CLASSIFICATION	EN 1307 33-LC2	EN 1307 33-LC2	NUMBER OF COLOURS	12	13
CASTOR CHAIR SUITABILITY	EN 985 A: continuous use	EN 985 A: continuous use	DIMENSIONAL STABILITY	EN 986 Max. 0,2%	EN 986 Max. 0,2%
DONNÉES ENVIRONNEMENTALES	Démarche HQE [®] : cf. FDES suivant NF P01-010 Déclaration du 30/07/2003	Démarche HQE [®] : cf. FDES suivant NF P01-010 Déclaration du 30/07/2003	GUT-NR LEED [®]	11000732 Product contributes toward satisfying Credits under LEED [®] . For more information, see the modulyss sustainable datasheets.	6C678441 Product contributes toward satisfying Credits under LEED [®] . For more information, see the modulyss sustainable datasheets.



MOT/17 FFF/2023

Sustainable datasheet

1. RECYCLED CONTENT

- a. 48% Overall recycled content.
- b. **Yarn**
100% PA6 Solution Dyed Nylon.
- c. **Secondary Backing – back2back**
The waste from the tile cutting process is shredded and added to the secondary backing, giving it a 10% post-industrial recycled content.
- d. **Recycled limestone in the backing**
The filler used for the production of our carpet tiles is 100% post-industrial recycled, diverted from a waste stream of the limestone mining.

2. MANUFACTURING

- a. **Renewable energy**
49% of our energy consumption is electricity. The electricity that we use at modulyss is 100% 'green electricity' generated from renewable resources such as our own solar panels.
- b. **Production site & process**
modulyss runs an integrated production chain: from tufting to the packaging of the finished tile.
ISO certification
Our production site is ISO-9001 certified (Quality Management) since 2000 and ISO-14001 certified (Environmental Management) since 2009. modulyss also works in accordance with ISO26000 and publishes a Corporate Social Responsibility report in line with the guidelines of the Global Reporting Initiative (GRI), the international standard for sustainability reporting, and the UN's Sustainable Development Goals (SDGs).
Recycling raw yarns
All the left over and waste yarns are collected and recycled into new yarns.
Ecological Packaging
We only use cardboard boxes that are made of 100% recycled material.
- c. **Sustainability report**
Read all about our approach to the environment in our sustainability report 2016: <http://www.modulyss.com/ebook/mvo/>.

3. INSTALLATION

- a. **Adhesive**
modulyss™ advises to use a solvent-free, easy release system with very low emissions.
- b. **Installation waste**
In a rectangular building, installed before walls, using our installation descriptions the waste for carpet tiles is 3-4%. In comparison for broadloom the waste during installation rises to ± 10%. More information can be found in our installation instructions.

4. END OF LIFE

- a. **Re-use**
At the end of life, after cleaning, carpet tiles can be re-used in non-critical areas, to extend the product life.
- b. **Recycling**
Carpet tiles can be used as raw material for the backing of new carpet tiles in our back2back program.
- c. **CARE**
Partnership modulyss//Vanheede Environment Group in which carpet tiles are converted into secondary fuel to reduce CO₂ emissions significantly. The minerals are extracted from the carpet tiles and recycled into raw material for the cement production industry, which results in ± 50% recycling of our carpet tiles.

5. VOC'S & CHEMICAL SUBSTANCES

- This product fulfills the testing criteria for emissions of:
- a. **CRI (US and international)**
Carpet & Rug Institute
Compliant to the requirements of Green Label Plus, GLP 1100 (see LEED®, point 7.b).
 - b. **GUT (DE)**
Gemeinschaft Umweltfreundlicher Teppichboden
TVOC28<100 µg/m³
This product meets the GUT-criteria, 11000732 (MOTION) – 6C678441 (VISION). These criteria include VOC thresholds, odour and chemical substances.
 - c. **REACH (EU)**
modulyss™ complies with the strict European REACH standards.
 - d. **Sundahus (SE)**
Sundahus Miljødata is a system of health and environmental assessment of products in the construction and real estate businesses. The core of the system is a database of substances, materials and products. B-rating.
 - e. **M1 (FI)**
This certificate is granted by the Building Information Foundation RTS sr. The aim of the classification is to enhance the development and the use of low-emitting building materials to create a healthy indoor environment.

6. ENVIRONMENTAL PRODUCT DECLARATION (EPD)

An EPD is a standardised way to provide information on the environmental impact of a product during the entire life. They include information on the environmental impact of raw material extraction and production, energy use and efficiency, content of materials and chemical substances, emissions to air, soil and water and waste generation. A product-specific EPD in accordance with the ISO14025 and EN15804, is available for this product. The EPD-declaration-number is EPD-MOD-20170077-CBC1-EN.

7. COMPLIANCE TO GREEN BUILDING CERTIFICATIONS

- a. **BRE Global (UK)**
Building Research Establishment.
This product can contribute towards credits in:
Hea 02 – Indoor Air Quality
To recognise and encourage a healthy internal environment through the specification and installation of appropriate ventilation, equipment and finishes.
■ Use of a low-emission adhesive on installation (EN EN 13999-1:2007) can contribute to this credit.
■ modulyss™ carpet tiles meet the requirements of EN14041, including E1 classification for formaldehyde emissions, and can contribute to the credit for healthy internal air quality.
Hea 05 – Acoustic performance
To ensure the buildings' acoustic performance including sound insulation meet the appropriate standards for its purpose. This product is highly sound-absorbent. It reduces contact noise by 26 (MOTION) – 27 (VISION) decibels (ΔL_w - ISO 10140) and has an absorption coefficient of 0.20 (ISO 354).
MAT 1 – Life Cycle Impact
All modulyss™ products are rated for offices according to BRE Green Guide to Specification. The BRE Global Environmental Profiles Certification Scheme requires evidence of a minimum of 6 months continuous production prior to a request for certification and the certification process takes approximately 6 months to complete. As a result, we are currently not able to provide a BRE Global Environmental Profile Certificate for Motion /// Vision but please note that a similar product has obtained an Ecopoint score of 0,325 and is A-rated for offices.
MAT 5 – Designing for Robustness
To recognise and encourage adequate protection of exposed elements of the building and landscape, therefore minimising the frequency of replacement and maximising materials optimisation. This product satisfies the requirements of EN1307 classification, class 33 - LC2 for intensive use in a contact environment.
WST 01 – Construction Waste Management
To promote resource efficiency via the effective management and reduction of construction waste. This product can contribute to waste reduction on site. See item 3, installation, for more details. Concerns cutting waste on installation of carpet tiles.

b. LEED® (US and international)

Leadership in Energy and Environmental Design modulyss products can contribute to the following LEED® v4 credits:

- MR credit: Interiors Life-Cycle Impact Reduction.
- MR credit: Building product disclosure and optimisation - Environmental Product Declarations.
- MR credit: Building product disclosure and optimisation - Sourcing of raw materials. MR4 Post-Industrial recycled content: 48%, MR4 Post-Consumer recycled content: 0%.
- MR credit: Building product disclosure and optimisation - Material ingredients.
- MR credit: Construction and demolition waste management.
- EQ credit: Low emitting materials.
- EQ credit: Indoor air quality assessment.
- EQ credit: Acoustic performance.

Products are not reviewed under LEED®. LEED® credit requirements cover the performance of materials in aggregate, not the performance of individual products or brands. For more information on LEED®, visit www.usgbc.org/contact.

c. HQE (FR)

Haute Qualité Environnementale
In 2005 modulyss™ was awarded the HQE certificate by FDES in accordance with NF P01 010. This product can contribute to eight of the 13 HQE targets as follows:

Eco-Construction	MOQUETTES FDES
Integrated choice of products and construction materials	T2
Low site nuisance	T3
Comfort	MOQUETTES FDES
Hygrothermal comfort	T8
Acoustic comfort	T9
Visual comfort	T10
No unpleasant smells	T11
Health	MOQUETTES FDES
Sanitary quality of areas	T12
Sanitary air quality	T13

8. HEALTH & COMFORT

- a. **Solvent-free Bitume**
For the bitumebacking we only use bitumen that is not oxidised and is solvent-free.
- b. **No heavy metals**
modulyss™ carpet tiles are free of heavy metals and other harmful substances, such as lead, mercury or chromium.
- c. **Odour**
modulyss™ carpet tiles are free from odours (see GUT certification program).
- d. **Acoustics**
This product is strongly sound absorbent. It reduces the contact noise by 26 (MOTION) – 27 (VISION) decibels (ΔL_w - ISO 10140), with a perfect acoustic effect as result.