

11

PRICE RANGE ■ ■ □

HERITAGE
COLLECTION

POLDER



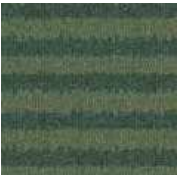
LRV 21 L 53 224



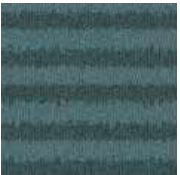
LRV 20 L 52 216



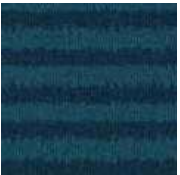
LRV 25 L 57 901



LRV 10 L 37 683



LRV 10 L 38 517



LRV 6 L 28 579



LRV 5 L 27 395



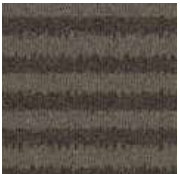
LRV 26 L 58 102



LRV 12 L 42 831



LRV 6 L 30 832



LRV 12 L 41 908



LRV 3 L 21 965



POLDER, DUNE, MEADOW 216

POLDER

CONSTRUCTION STRUCTURE STRUKTUR STRUCTUUR	Tufted 1/12" Loop Tufté 1/12" Bouclé Getuftet 1/12" Schlinge Getuft 1/12" Luspool	FIRE RESISTANCE COMPORTEMENT AU FEU BRENNVERHALTEN BRANDGEDRAG	EN 13501-1: B ₁ -s1 ASTM E-648: Class 1
PILE MATERIAL COUCHE D'USURE POLMATERIAL POOLMATERIAAL	100% ECONYL® yarn 100% regenerated solution dyed nylon	FASTNESS TO LIGHT SOLIDITE À LA LUMIERE LICHTECHTHEIT LICHTECHTHEID	ISO 105-B02 ≥ 7
SECONDARY BACKING DOSSIER RÜCKENAUSSTATTUNG RUG	ecoBack: fully recyclable polyolefin based carpet tile backing with minimum 70% post-industrial recycled content	RUBBING FASTNESS SOLIDITÉ AU FROTTEMENT REIBECHTHEIT WRIJFECHTHEID	EN ISO 105-X12 ≥ 4
TOTAL WEIGHT POIDS TOTAL GESAMTGEWICHT TOTAAL GEWICHT	Ca. 3 600 g/m ² Ca. 106.18 oz/yd ²	COLOUR FASTNESS TO WATER SOLIDITÉ À L'EAU WASSERECHTHEIT WATERECHTHEID	EN ISO 105-E01 ≥ 4
PILE WEIGHT POIDS DU VELOURS POLEINSATZGEWICHT POOLGEWICHT	Ca. 640 g/m ² Ca. 18.88 oz/yd ²	THERMAL RESISTANCE RÉSISTANCE THERMIQUE WÄRMEDURCHLABWIDERSTAND WARMTEDOORLAATWEERSTAND	ISO 8302 0.078 m ² K/W
PILE ABOVE BACKING POIDS DE VELOURS UTILE POLNUTZSCHICHTGEWICHT NUTTIG POOLGEWICHT	Ca. 490 g/m ² Ca. 14.45 oz/yd ²	IMPACT NOISE RATING ISOLATION PHONIQUE TRITTSCHALLVERBESSERUNGMAß GELUIDSISOLATIE	ISO 10140 ΔL _w : ca 26 dB
TOTAL HEIGHT EPAISSEUR TOTALE GESAMTDICKE TOTALE DIKTE	Ca. 6.8 mm Ca. 0.27"	SOUND ABSORPTION ABSORPTION PHONIQUE SCHALLABSORPTIONSGRAD GELUIDSABSORPTIE	ISO 354 α _w : 0.20
PILE HEIGHT EPAISSEUR DU VELOURS POLDICKE POOLHOOGTE	Ca. 3.8 mm Ca. 0.15"	PERMANENT ANTISTATIC ANTISTATIQUE PERMANENT PERMANENT ANTISTATISCH PERMANENT ANTISTATISCH	ISO 6356 ≤ 2 kV
PILE DENSITY DENSITÉ DU VELOURS POLROHDICHTE POOLDICHTHEID	Ca. 0.129 g/cm ³ Ca. 3 479 oz/yd ³	TRANSVERSAL RESISTANCE RESISTANCE TRANSVERSAL DURCHGANGSWIDERSTAND DOORGANGSWEERSTAND	ISO/DIS 10965 ≤ 1 x 10 ⁹ Ohm
TUFT DENSITY NOMBRE DE TOUFFES NOPPENZAHL AANTAL PUNTEN	Ca. 216 200 /m ² Ca. 180 769 /yd ²	SIZE & PACKING DIMENSION & EMBALLAGE ABMESSUNG & VERPACKUNG AFMETINGEN & VERPAKKING	50 x 50 cm 19.7" x 19.7" box: 5 m ² 5.98 yd ² pallet: 20 boxes
CLASSIFICATION CLASSEMENT KLASSIFIKATION CLASSIFICATIE	EN 1307 33 - LC1	NUMBER OF COLOURS NOMBRE DE COLOURS ANZAHL DER FARBEN AANTAL KLEUREN	12
CASTOR CHAIR SUITABILITY EMPLOI CHAISE À ROULETTES STUHLROLLENEIGNUNG ROLSTOELGESCHIKTHEID	EN 985 A: continuous use	DIMENSIONAL STABILITY STABILITÉ DIMENSIONNELLE DIMENSIONSTABILITÄT DIMENSIONELE STABILITEIT	EN 986 Max. 0.20%
		GUT-NR	TBC
		LEED®	Product contributes toward satisfying Credits under LEED®. For more information, see the modulys sustainable datasheets.
		DGNB	modulys is member of DGNB, the German Sustainable Building Council.

