



**modu
lyss®**

SPARK 398 & GLEAM 398

53

SPARK

179



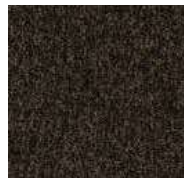
LRV 6 L 28

313



LRV 5 L 26

352



LRV 6 L 27

212



LRV 4 L 23

550



LRV 5 L 27

907



LRV 7 L 30

866



LRV 9 L 36

847



LRV 4 L 23

306



LRV 5 L 25

482



LRV 6 L 27

609



LRV 5 L 25

579



LRV 9 L 36

961



LRV 8 L 33

989



LRV 20 L 51

140



LRV 5 L 25

398



LRV 5 L 26

581



LRV 7 L 30

511



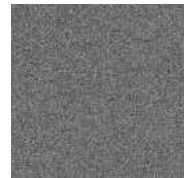
LRV 10 L 38

530



LRV 11 L 39

994



LRV 16 L 47

932



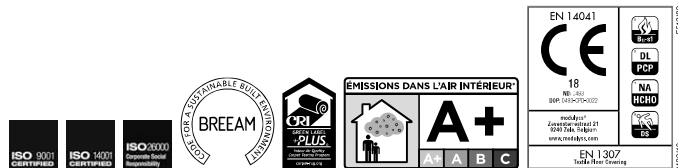
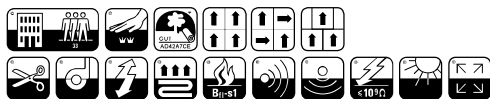
LRV 28 L 60

102

SPARK

180 Technical datasheet

CONSTRUCTION	Tufted 1/10" Loop	FIRE RESISTANCE	EN 13501-1: B _s -s1
PILE MATERIAL	100% PA 6	FASTNESS TO LIGHT	ISO 105-B02 ≥ 5-6
SECONDARY BACKING	Back2Back: Modified bitumen enhanced with a thermoplastic elastomer, reinforced with a glass fibre fleece covered with 100% PES fleece, 10% recycled content included	RUBBING FASTNESS	EN ISO 105-X12 ≥ 4
TOTAL WEIGHT	Ca. 4 350 g/m ²	COLOUR FASTNESS TO WATER	EN ISO 105-E01 ≥ 4
PILE WEIGHT	Ca. 690 g/m ²	THERMAL RESISTANCE	ISO 8302 0,059 m ² K/W
PILE ABOVE BACKING	Ca. 500 g/m ²	IMPACT NOISE RATING	ISO 10140 ΔL _w : 40 dB (1 000 Hz) ΔL _w : 24 dB
TOTAL HEIGHT	Ca. 6,6 mm	SOUND ABSORPTION	ISO 354 α _w : 0,15 Hz 125 250 500 1000 2000 4000 α _s 0,01 0,02 0,06 0,17 0,33 0,44
PILE HEIGHT	Ca. 3,5 mm	PERMANENT ANTISTATIC	ISO 6356 ≤ 2 kV
PILE DENSITY	Ca. 0,143 g/cm ³	TRANSVERSAL RESISTANCE	ISO/DIS 10965 ≤ 1 x 10 ⁴ Ohm
TUFT DENSITY	Ca. 272 000 /m ²	SIZE & PACKING	50 cm x 50 cm box: 5 m ² pallet: 20 boxes
CLASSIFICATION	EN 1307 33 - LC2	NUMBER OF COLOURS	21, Special colours possible
CASTOR CHAIR SUITABILITY	EN 985 A: continuous use	DIMENSIONAL STABILITY	EN 986 Max. 0,2%
DONNÉES ENVIRONNEMENTALES	Démarche HQE [®] : cf, FDES suivant NF P01-010 Déclaration du 30/07/2003	GUT-NR LEED[®]	AD42A7CE Product contributes toward satisfying Credits under LEED [®] . For more information, see the modulys sustainable datasheets.



Sustainable datasheet

1. RECYCLED CONTENT

- 54% Overall recycled content.
- Yarn**
100% PA 6.
- Primary Backing**
Colback SMR is produced out 100% post-consumer recycled PET, originated from bottle scrap.
- Secondary Backing – back2back**
The waste from the tile cutting process is shredded and added to the secondary backing, giving it a 10% post-industrial recycled content.
- Recycled limestone in the backing**
The filler used for the production of our carpet tiles is 100% post-industrial recycled, diverted from a waste stream of the limestone mining.

2. MANUFACTURING

- Renewable energy**
49% of our energy consumption is electricity. The electricity that we use at modulyss is 100% 'green electricity' generated from renewable resources such as our own solar panels.
- Production site & process**
modulyss runs an integrated production chain: from tufting to the packaging of the finished tile.
ISO certification
Our production site is ISO-9001 certified (Quality Management) since 2000 and ISO-14001 certified (Environmental Management) since 2006, modulyss also works in accordance with ISO26000 and publishes a Corporate Social Responsibility report in line with the guidelines of the Global Reporting Initiative (GRI), the international standard for sustainability reporting, and the UN's Sustainable Development Goals (SDGs).
Recycling raw yarns
All the left over and waste yarns are collected and recycled into new yarns.
Ecological Packaging
We only use cardboard boxes that are made of 100% recycled material.
- Sustainability report**
Read all about our approach to the environment in our sustainability report 2016: <http://www.modulyss.com/ebook/mvo/>.

3. INSTALLATION

- Adhesive**
modulyss[®] advises to use a solvent-free, easy release system with very low emissions.
- Installation waste**
In a rectangular building, installed before walls, using our installation descriptions the waste for Carpet tiles is 3-4%. In comparison for broadloom the waste during installation rises till ± 10%. More information can be found in our installation instructions.

4. END OF LIFE

- Re-use**
At the end of life, after cleaning, carpet tiles can be re-used in non-critical areas, to extend the product life.
- Recycling**
Carpet tiles can be used as raw material for the backing of new carpet tiles in our back2back program.
- CARE**
Partnership modulyss[®]/Vanheede Environment Group in which carpet tiles are converted into secondary fuel to reduce CO₂ emissions significantly. The minerals are extracted from the carpet tiles and recycled into raw material for the cement production industry, which results in ± 50% recycling of our carpet tiles.

5. VOC'S & CHEMICAL SUBSTANCES

This product fulfills the testing criteria for emissions of:

- CRI (US and international)**
Carpet & Rug Institute
Compliant to the requirements of Green Label Plus certificate GLP 1101 (see LEED[®], point 7.b).
- GUT (DE)**
Gemeinschaft Umweltfreundlicher Teppichboden
TVOC28<100 µg/m³
This product meets the GUT-criteria, GUT-license number AD42A7CE. These criteria include VOC thresholds, odour and chemical substances.
- REACH (EU)**
modulyss[®] complies with the strict European REACH standards.
- Sundahus (SE)**
Sundahus Miljødata is a system of health and environmental assessment of products in the construction and real estate businesses. The core of the system is a database of substances, materials and products, B-rating.

6. ENVIRONMENTAL PRODUCT DECLARATION (EPD)

An EPD is a standardised way to provide information on the environmental impact of a product during the entire life. They include information on the environmental impact of raw material extraction and production, energy use and efficiency, content of materials and chemical substances, emissions to air, soil and water and waste generation. A product-specific EPD in accordance with the ISO14025 and EN15804, is available for this product. The EPD-declaration-number is EPD-MOD-20170095-CBC1-EN.

7. COMPLIANCE TO GREEN BUILDING CERTIFICATIONS

- BRE Global (UK)**
Building Research Establishment.
This product can contribute towards credits in:
Ha02 – Indoor Air Quality
To recognise and encourage a healthy internal environment through the specification and installation of appropriate ventilation, equipment and finishes.
■ Use of a low-emission adhesive on installation (EN EN 13959-1:2007) can contribute to this credit.
■ modulyss[®] carpet tiles meet the requirements of EN14041, including E1 classification for formaldehyde emissions, and can contribute to the credit for healthy indoor air quality.
Ha05 – Acoustic performance
To ensure the buildings' acoustic performance including sound insulation meet the appropriate standards for its purpose. This product is highly sound-absorbent. It reduces contact noise by 24 decibels (ΔL_w - ISO 10140) and has an absorption coefficient of 0,15 (ISO 354).
MAT 1 – Life Cycle Impact
All modulyss[®] products are rated for offices according to BRE Green Guide to Specification. The BRE Global Environmental Profile Certification Scheme requires evidence of a minimum of 6 months continuous production prior to a request for certification and the certification process takes approximately 6 months to complete. As a result, we are currently not able to provide a BRE Global Environmental Profile Certificate for Spark but please note that a similar product has obtained an Ecopoint score of 0,331 and is A-rated for offices.
MAT 5 – Designing for Robustness
To recognise and encourage adequate protection of exposed elements of the building and landscape, therefore minimising the frequency of replacement and maximising materials optimisation. This product satisfies the requirements of EN1307 classification, class 33 - LC2 for intensive use in a contract environment.
WST 01 – Construction Waste Management
To promote resource efficiency via the effective management and reduction of construction waste. This product can contribute to waste reduction on site. See item 3. installation, for more details. Concerns cutting waste on installation of carpet tiles.
- LEED[®] (US and international)**
Leadership in Energy and Environmental Design
modulyss products can contribute to the following LEED v4 credits:
MR credit: Interiors Life-Cycle Impact Reduction.
MR credit: Building product disclosure and optimization - Environmental Product Declarations.
MR credit: Building product disclosure and optimization - Sourcing of raw materials.
MR4 Post-Industrial recycled content: 52%,
MR4 Post-Consumer recycled content: 2%.
MR credit: Building product disclosure and optimization - Material ingredients.
MR credit: Construction and demolition waste management.
EQ credit: Low emitting materials.
EQ credit: Indoor air quality assessment.
EQ credit: Acoustic performance.

Products are not reviewed under LEED. LEED credit requirements cover the performance of materials in aggregate, not the performance of individual products of brands. For more information on LEED, visit www.usgbc.org/contact.

c. HQE (FR)

Haute Qualité Environnementale
In 2005 modulyss[®] was awarded the HQE certificate by FDES in accordance with NF P01 010. This product can contribute to eight of the 13 HQE targets as follows:

Eco-Construction	MOQUETTES FDES
Integrated choice of products and construction materials	T2
Low site nuisance	T3
Comfort	MOQUETTES FDES
Hygothermal comfort	T8
Acoustic comfort	T9
Visual comfort	T10
No unpleasant smells	T11
Health	MOQUETTES FDES
Sanitary quality of areas	T12
Sanitary air quality	T13

d. Good Environmental Choice Australia (GECA) (AU)

Australia's only independent, not-for-profit, multi-sector ecolabelling program. Certification program that assesses and certifies products and services that have a lower impact on the environment and human health and address important social considerations.

8. HEALTH & COMFORT

- Solvent-free Bitume**
For the bitumebacking we only use bitumen that is not oxidised and is solvent-free.
- No heavy metals**
modulyss[®] carpet tiles are free of heavy metals and other harmful substances, such as lead, mercury or chromium.
- Odour**
modulyss[®] carpet tiles are free from odours (see GUT certification program).
- Acoustics**
This product is strongly sound absorbent. It reduces the contact noise by 24 decibels (ΔL_w - ISO 10140), with a perfect acoustic effect as result.