

Technical Data

Classification	Standard	Reflections 55	Reflections Loose Lay 55
Product type	EN ISO 10582	Heterogeneous flooring, LVT Dryback	Heterogeneous flooring, Loose Lay
Domestic classification	EN ISO 10874	23 Heavy	23 Heavy
Commercial classification	EN ISO 10874	33 Heavy	33 Heavy
Industrial classification	EN ISO 10874	42 General	42 General

Technical Characteristics	Norm	Reflections 55	Reflections Loose Lay 55
Total Thickness	EN ISO 24346	2.50 mm	5 mm
Wear Layer Thickness	EN ISO 24340	0.55 mm	0.55 mm
Wear Resistance	EN 660-2	T	T
Surface Treatment		PUR	PUR
Bevelled Edges		Wood: 4sides / Stone: No	Wood: 4sides / Stone: No
Installation Method		Glue-down	Glue-free

Performance For CE Marking	Norm	Reflections 55	Reflections Loose Lay 55
Declaration of Performance	EN 14041	Yes	Yes

Technical Performance	Norm	Reflections 55	Reflections Loose Lay 55
Dimensional Stability	EN ISO 23999	≤ 0.25%	≤ 0.15%
Curl Resultant To Heat	EN ISO 23999	≤ 2mm	≤ 2mm
Residual Indentation	EN ISO 24343-1	≤ 0.10 mm	≤ 0.10 mm
Reaction To Fire	EN 13501-1	Bfl-s1	Bfl-s1
Furniture Leg	EN ISO 16581	No Damage	No Damage
Castor Chair	EN ISO 4918	No Damage	No Damage
Impact Sound Reduction - ΔLw	EN ISO 717/2	4dB	10dB
Peeling Resistance	EN ISO 24345	≥ 50N/50mm	≥ 50N/50mm
Thermal Resistance	EN ISO 10456	0.02 m²·K/W	0.04 m²·K/W
Colour Fastness To Light	EN ISO 105-B02	≥ 6	≥ 6
Resistance To Chemical	EN 423	Class 0	Class 0
Slip Resistance	DIN 51130	R10	R10
Slip Resistance	EN 13893	Class DS (μ ≥ 0.30)	Class DS (μ ≥ 0.30)
Underfloor Heating		Suitable (Maximum 27°C)	Suitable (Maximum 27°C)

Sustainability Performances	Norm	Reflections 55	Reflections Loose Lay 55
TVOC Emissions	AgBB	≤ 0.01mg/m³	≤ 0.01mg/m³
Formaldehyde Emission	EN 717-1	E1	E1
Recycled Content		Yes	Yes
Phthalate - Free		Yes	Yes

Dimensions and designs	Reflections 55	Reflections Loose Lay 55
Plank	101.6 x 609.6mm/Plank, 1.11m²/Box 190 x 1227mm/Plank, 3.96m²/Box 228.6 x 1524mm/Plank, 5.57m²/Box	190 x 1227mm/Plank, 1.87m²/Box 228.6 x 1524mm/Plank, 2.09m²/Box
Tile	305 x 610mm/Tile, 3.72m²/Box 914.4 x 914.4mm/Tile, 4.18m²/Box	305 x 610mm/Tile, 1.67m²/Box 914.4 x 914.4mm/Tile, 2.51m²/Box



www.hualifloors.com

Huali Factory in China

Taizhou Huali New Materials Co., Ltd.
Zhangdian Industrial Zone,
Jiangyan District, Taizhou,
Jiangsu, China

Huali Factory in USA

3937 Old Federal Road,
North Chatsworth,
Georgia 30705, USA

Huali Factory in Vietnam

Lot CN2, Zone A, Diem Thuy
Industrial Park, Hong Tien
Ward, Pho Yen City, Thai
Nguyen Province, Vietnam

Huali Factory in Thailand

No.168 Moo.3 Mapkha
Sub-District, Nikomphattana
District, Rayong Province.21180
Thailand

Reflections 55

BEYOND YOUR IMAGINATION,
THE NEXT GENERATION OF VINYL FLOORING



 **HUALIFLOR**

Beauty & performance come together

Taking Vinyl Flooring to The Next Level

Next generation vinyl flooring since 2002

Huali Floors was established on April 15th, 2002 as Taizhou Huali Plastic Co. Ltd. We are located in Taizhou City, in the Shanghai metropolitan area. Our vision has always been to provide sustainable, high quality vinyl floors to customers all over the globe. 18 years later, this vision has become reality: Up to 2020, we produce a capacity of 1,800 shipped containers every month and export them to more than a dozen countries and regions.

Our company covers an area of 390,960 square meters including a production area of 360,000 square meters. These numbers make us the world's largest producer of vinyl flooring. But Huali Floors is not just about numbers. We are a company with values and stand for quality, design, reliability, internationality, responsibility and innovation.



Responsibility

We take responsibility for environment by investing high amounts in sustainable production.



Design

More than 4,000 designs, amongst them 2,000 exclusive designs, for a unique visual appearance.

The World's Largest Producer of Vinyl Flooring

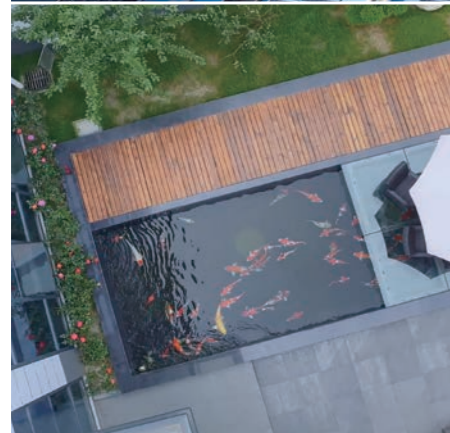


We pave the world for a better living

Life is full of changes and challenges. Every day offers you a new opportunity to grow and realize yourself. Every day marks another step in your walk of life. But to grow, you need a solid ground you can rely on. A stable base that makes you appreciate every step you take, that gives you warmth and confidence and makes you feel comfortable. And this is, what Huali Floors is about –we create floors for you to take the next step in this challenging world. We take vinyl flooring to the next level.

Internationality

We export our products all around the globe with a monthly production capacity of 1,800 shipped containers.



Internationally certified products of first-class quality

Our product range includes glue-down LVT, loose-lay LVT, regular LVT, Rigid LVT (SPC) and WPC with click system of 2G, 5Gi and 5G-C. Huali Floors has been awarded with different international certificates that prove the quality of our products, e.g. ISO9001, ISO14001, Greenguard and many more. For stringent quality control and monitoring the content of VOC, heavy metal and other related chemical materials, we invested 2 million USD to build a large Testing Center. Huali Floors does its best to protect environment by acknowledging social responsibility.

Establish manufacturing facility in US

Huali is going globalization. To further build our network, we announced the plans to establish our U.S. headquarters and manufacturing facility in Georgia on May 27, 2020. The new facility started running on March, 2021. It will have 21 SPC lines in total by end of 2022. Under this, we can offer more direct support and effective service to customers of North America. As one of the leading manufacturers of vinyl flooring, Huali keeps moving forward !

Quality

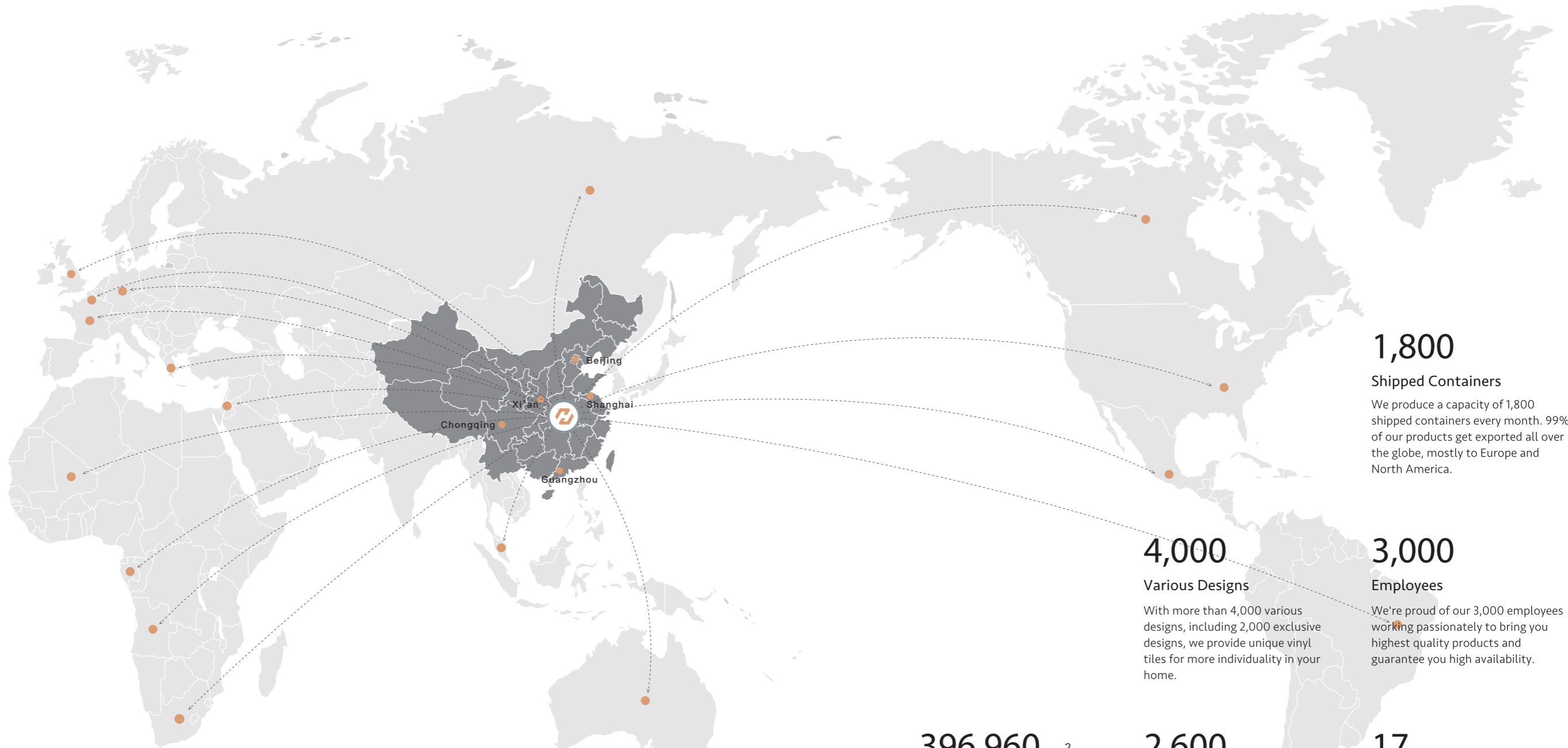
We deliver high quality, resistant products that run through stringent quality controls.



We Pave The World!

Global Player

We are proud of our international network



90% „We export 90 % of our products to Europe and North America.“

396,960 m²

Coverage
Huali floors itself covers an area of altogether 396,960 square meters. This makes us the world's largest producer of vinyl flooring.

4,000

Various Designs
With more than 4,000 various designs, including 2,000 exclusive designs, we provide unique vinyl tiles for more individuality in your home.

2,600

Capacity
With total capacity of 2600 containers per month, we have adequate productivity to ensure on time delivery and meet customer expectation .

1,800

Shipped Containers
We produce a capacity of 1,800 shipped containers every month. 99% of our products get exported all over the globe, mostly to Europe and North America.

3,000

Employees
We're proud of our 3,000 employees working passionately to bring you highest quality products and guarantee you high availability.

17

International Certificates
Our company has been awarded with 17 international certificates that prove the quality and safety of our products referring to international standards.



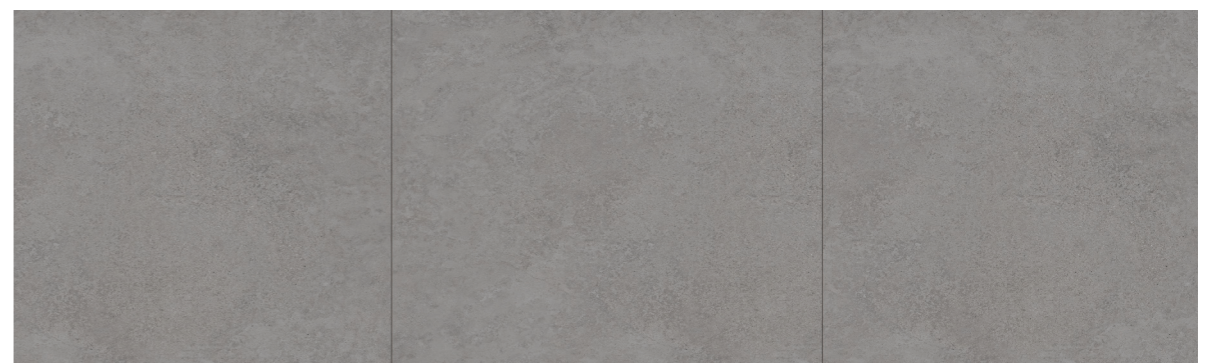
25557186(LVT) / 50557186(LVT Loose Lay)

Special Notes: Pictures above for reference only, because of printing caused chromatic difference from the objects, please consult with the real products.

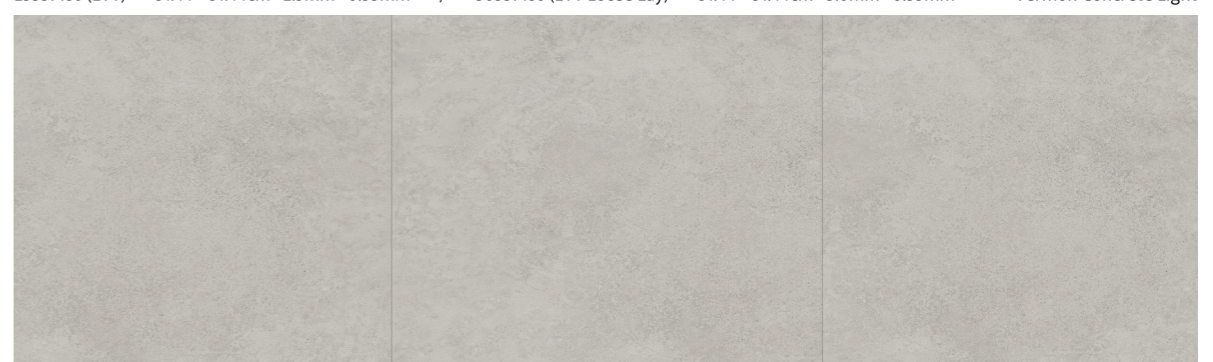


25557189(LVT) / 50557189(LVT Loose Lay)

25557189 (LVT) 91.44 × 91.44cm 2.5mm 0.55mm / 50557189 (LVT Loose Lay) 91.44 × 91.44cm 5.0mm 0.55mm Vermon Concrete Dark



25557186 (LVT) 91.44 × 91.44cm 2.5mm 0.55mm / 50557186 (LVT Loose Lay) 91.44 × 91.44cm 5.0mm 0.55mm Vermon Concrete Light





25553007(LVT) / 50553007(LVT Loose Lay)

Special Notes: Pictures above for reference only, because of printing caused chromatic difference from the objects, please consult with the real products.



25553009(LVT) / 50553009(LVT Loose Lay)

25553009 (LVT) 61.0 × 30.5cm 2.5mm 0.55mm / 50553009 (LVT Loose Lay) 61.0 × 30.5cm 5.0mm 0.55mm Concrete Dark Grey



25553007 (LVT) 61.0 × 30.5cm 2.5mm 0.55mm / 50553007 (LVT Loose Lay) 61.0 × 30.5cm 5.0mm 0.55mm Concrete Light





25551502(LVT) / 50551502(LVT Loose Lay)

Special Notes: Pictures above for reference only, because of printing caused chromatic difference from the objects, please consult with the real products.

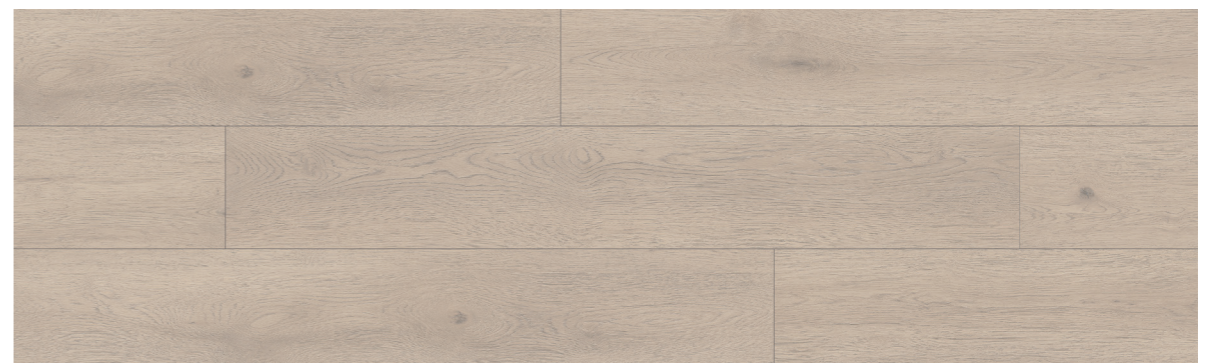


25551503(LVT) / 50551503(LVT Loose Lay)

25551503 (LVT) 122.7 × 19.0cm 2.5mm 0.55mm / 50551503 (LVT Loose Lay) 122.7 × 19.0cm 5.0mm 0.55mm Taku Oak Light Grey



25551502 (LVT) 122.7 × 19.0cm 2.5mm 0.55mm / 50551502 (LVT Loose Lay) 122.7 × 19.0cm 5.0mm 0.55mm Taku Oak Light Grege



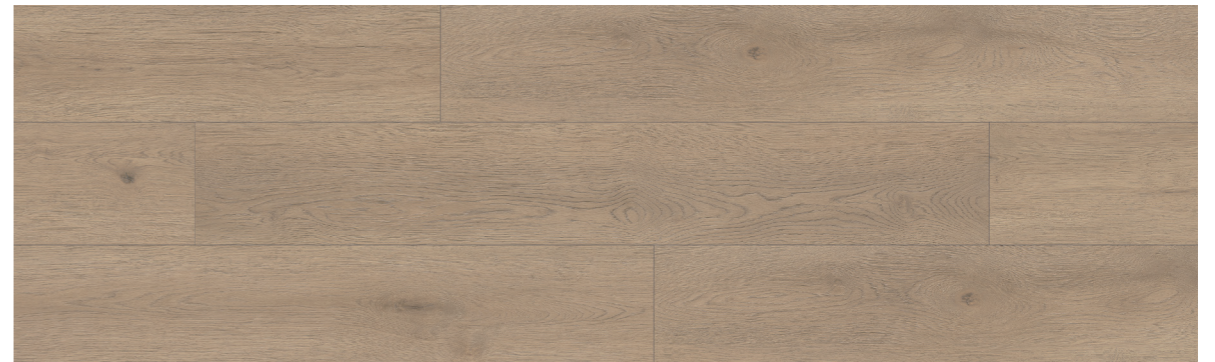


25550658(LVT) / 50550658(LVT Loose Lay)



25551505(LVT) / 50551505(LVT Loose Lay)

25551505 (LVT) 122.7 × 19.0cm 2.5mm 0.55mm / 50551505 (LVT Loose Lay) 122.7 × 19.0cm 5.0mm 0.55mm Taku Oak Soft



25550658 (LVT) 122.7 × 19.0cm 2.5mm 0.55mm / 50550658 (LVT Loose Lay) 122.7 × 19.0cm 5.0mm 0.55mm Highland Oak Beige





25551482(LVT) / 50551482(LVT Loose Lay)



25550654(LVT) / 50550654(LVT Loose Lay)

25550654 (LVT) 122.7 × 19.0cm 2.5mm 0.55mm / 50550654 (LVT Loose Lay) 122.7 × 19.0cm 5.0mm 0.55mm Highland Oak Medium



25551482 (LVT) 152.4 × 22.8cm 2.5mm 0.55mm / 50551482 (LVT Loose Lay) 152.4 × 22.8cm 5.0mm 0.55mm Teslin Oak Beige





25550686(LVT) / 50550686(LVT Loose Lay)

Special Notes: Pictures above for reference only, because of printing caused chromatic difference from the objects, please consult with the real products.



25556507(LVT) / 50556507(LVT Loose Lay)

25556507 (LVT) 152.4 × 22.8cm 2.5mm 0.55mm / 50556507 (LVT Loose Lay) 152.4 × 22.8cm 5.0mm 0.55mm Highland Oak Medium Grey



25550686 (LVT) 152.4 × 22.8cm 2.5mm 0.55mm / 50550686 (LVT Loose Lay) 152.4 × 22.8cm 5.0mm 0.55mm Hatton Oak Beige





2555002(LVT)

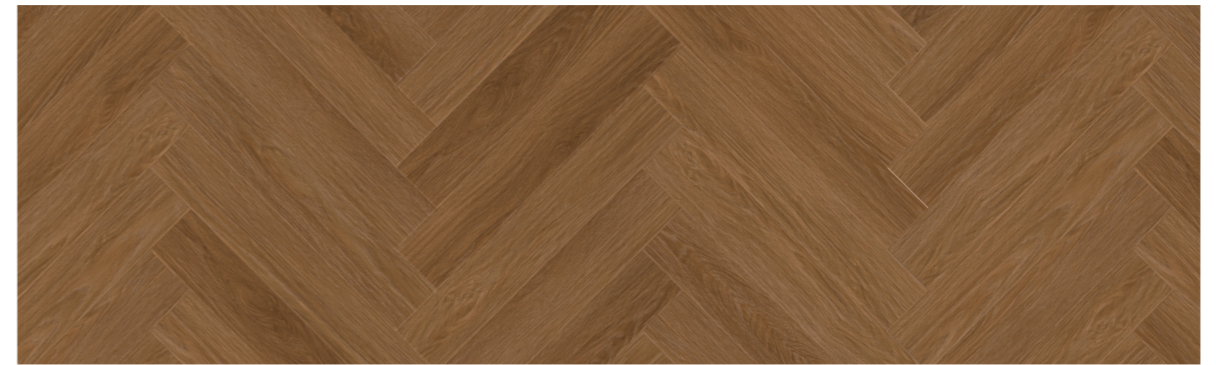
Special Notes: Pictures above for reference only, because of printing caused chromatic difference from the objects, please consult with the real products.



2555003(LVT)

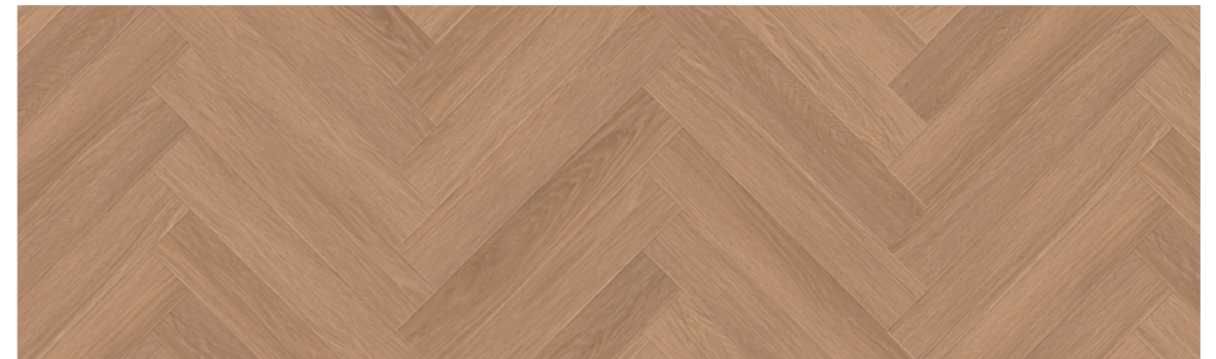
2555003 (LVT) 60.96 × 10.16cm 2.5mm 0.55mm

Herringbone Oak Soft Brown



2555002 (LVT) 60.96 × 10.16cm 2.5mm 0.55mm

Herringbone Oak Nature





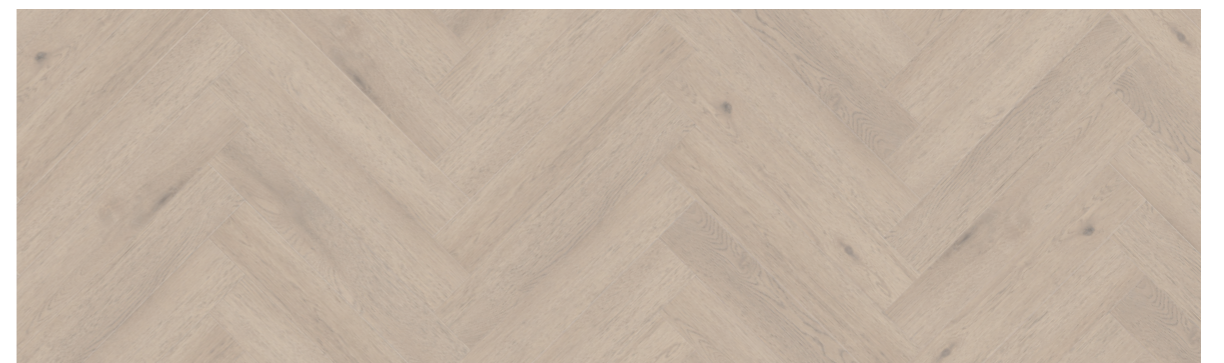
25555001 (LVT)



25555001 (LVT)

25555001 (LVT) 60.96 × 10.16cm 2.5mm 0.55mm

Herringbone Oak light Grege



PRODUCT STORAGE AND TRANSPORTATION

The flooring should be stored in batches as per batch number in a dry, clean and ventilated place below 40 °C.

In case of a heat source near the storage site, the flooring should be kept away from the heat source at least 1 meter, and neatly stacked with a stacking height not exceeding 2 meters.

The flooring should be handled carefully and not be thrown during transport in order to avoid damage to the corners of the tiles.

The flooring should be stored away from direct sunlight or rain. Avoid throwing and collision. Stack the products. Avoid being stored unsupported or upright.

The unused flooring that have been unpacked should be put back into the original packing box in time.

Installation-LVT-Loose Lay

FLOORING METHOD 1

Glue free/local frictioning flooring in small space

- Home decoration environment, with small single space area, which is suitable for glue-free flooring method.
- First, choose the appropriate flooring scheme according to the selected product color and pattern.
- Before flooring, the installation personnel should measure the length and width of the site and select a flooring process based on the actual conditions.
- When flooring, start from the middle of the room, or floor from the side of the most important reference wall. Before formal flooring, conduct pre-flooring to determine the flooring direction, and then floor from parallel to the wall until the last row.
- For places with heavy traffic, local micoadhesive installation or double-sided adhesive tape installation can be selected in this area. When the one-way length exceeds 6 meters, adhesive or double-sided adhesive tape with a width of 50cm can be applied at the bottom, perpendicular to the flooring direction of the floor, as a local fixation to use.

FLOORING METHOD 2

Flooring by roll coating PSA in large area

- First, choose the appropriate flooring scheme according to the selected product color and pattern.
- Before flooring, the installation personnel should measure the length and width of the site and select a flooring process based on the actual conditions.
- When the space area is large and the one-way length exceeds 6 meters, PSA can be sprayed or rolled to coat by spraying or with short hair rolling brush. Please note that the roll coating of glue should be as even as possible without leakage of glue.
- Conduct the flooring for the Loose Lay after the adhesive's opening hours according to the PSA Instructions.
- After the flooring completed, roll press the floor with a 50-70kg press roller to ensure the full combination of the floor and adhesive.

FLOORING METHOD 3

Flooring by roll coating PSA on OA elevated floor

- First, choose the appropriate flooring scheme according to the selected product color and pattern.
- Replace any damaged elevated floors and remove foreign objects and dust from the floors.
- If the surface of the elevated floor is seriously uneven, high strength cement can be chosen for based self-leveling or putty for local leveling. Otherwise, the uneven characteristics of the original elevated floor will be fed back to the surface of the product, which needs special attention.
- PSA can be sprayed or rolled to coat by spraying or with short hair rolling brush when the preliminary work is completed. Please note that the roll coating of glue should be as even as possible without leakage of glue.
- Conduct the flooring for the Loose Lay after the adhesive's opening hours according to the PSA Instructions.
- After the flooring completed, roll press the floor with a 50-70kg press roller to ensure the full combination of the floor and adhesive.

The flooring plan is to floor from the center of the room to achieve the best look and feel of the overall layout. (Fig. a Straight Joint Loose Lay Planning) :

A). Measure the dimensions of the room to be floored in both directions, including all alcoves, etc.

B). Draw center lines A-B, ensuring that they are the center of the living room dimensions.

C). Floor the Loose Lay to ensure that there are no small cutting edges around it. If a small size strip cut is evident, move the centerline half-of-rubber floor away in either direction to obtain an acceptable cut size.

D). Locate the center line A-B and mark the center point (CP).

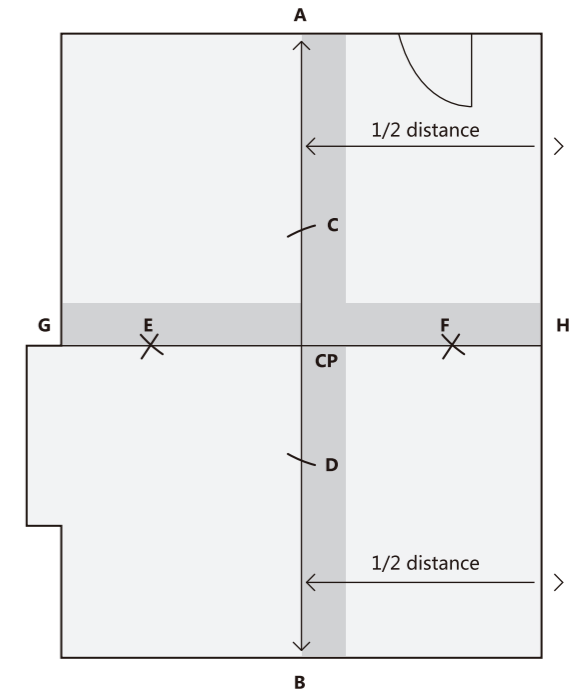
E). Mark arc C/D equidistant from the center line.

F). Draw arcs crossing points E and F, with points C and D as the center and with dimensions greater than the distance from the center as radius.

G). Draw a chalk line from point E to point F through the center.

H). Line H. HG and line AB are at 90°.

I). Start flooring from any quarter area to the entire room.



(Fig. a Straight joint Loose Lay planning)

Diagonal Joint Loose Lay Planning (Fig. b) :

A). Plan as above, ensuring that the two lines are 90° from each other.

B). Mark arcs on points C, D, E and F with CP as the center point and appropriate size as the radius.

C). With points C and D as the center and the radius equal to or greater than the size of C-CP, draw arcs tangent to each other at point G.

D). With points E and F as the center and the radius equal to the size of C-CP, draw arcs tangent to each other at point H.

E). Draw a chalk line from wall to wall through points G and H; If nothing goes wrong, the line will pass through the center point.

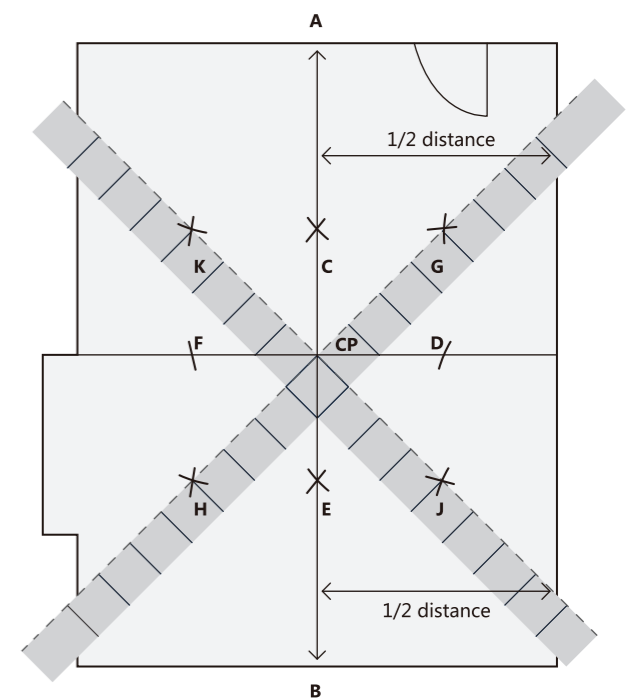
F). With points D and E as the center and the radius equal to the size of C-CP, draw a tangent to each other at point J.

G). With points C and F as the center and the radius equal to the size of C-CP, draw a tangent to each other at point K.

H). Draw a chalk line from wall to wall through points J and K; Verify whether the line crosses the center point.

I). For pre-flooring the Loose Lay, ensure that there are no small edges around it. If a small size strip cut is evident, move the centerline half-of-rubber floor away in either direction to obtain an acceptable cut size.

J). Install the product around the center point of CP first, ensuring that the product line is aligned diagonally with the FD line, and then extend the flooring to other areas in turn.



(Fig. b Diagonal joint Loose Lay planning)

Start from the wall next to the entrance for flooring, and then extend to the internal space.

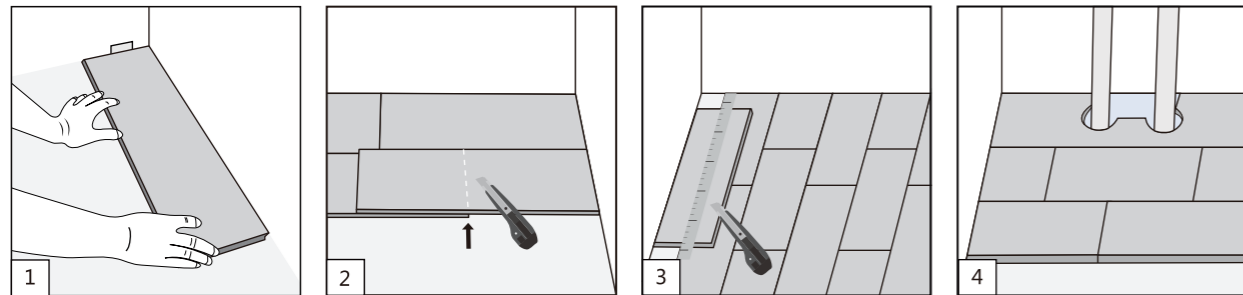
A. First, place the first piece of tile in left corner of the room (make the direction of arrow at the bottom parallel to the longitudinal wall, as shown in Fig. 1), then, flooring along the longitudinal wall towards the right until the first row is completed.

B. At the end of the first row, if necessary, cut the tile piece into appropriate size as needed with right methods according to the actual situation. Place a piece of tile next to the piece neighboring to it accurately, get another piece, and place it close to the wall and on the previous one, with it as the benchmark and mark on the previous one with a pencil, and then cut according to the mark to finish flooring (as shown in Fig. 2)

C. Flooring of the second row: cut the whole piece of tile into two identical parts and use one as the first piece of the second row (or use the tile left after finishing the first row as the first piece). Then flooring along the direction of the first row towards the right.

D. Repeat the above-mentioned procedures to finish the follow-up flooring. Please note that the direction of arrow at the bottom of each piece of tile shall be consistent with that of the first piece of tile.

E. When it comes to the last row against the wall, cut the tiles appropriately as necessary (as shown in Fig. 3). In case of any cylinder shaped or irregular post, please sketch the actual shape on a paperboard, and mark on the tile surface, then cut the tile (as shown in Fig. 4).



ATTENTIONS TO FLOORING:

In order for the best flooring result, 48 hours before the installation, during the installation, as well as 48 hours after the installation, please keep the environment temperature at the construction site within the range of 18 C-27 C.

When flooring, keeping the direction of arrow of each tile consistent would guarantee the consistent glossiness, otherwise, if the tiles are floored criss-cross or at random, there may be the differences of glossiness of being bright or dim, which is a normal phenomenon.

During the process of flooring, check the difference of height and joints between any two pieces of tiles. There should not be any obvious difference of height ($\leq 0.15\text{mm}$), nor any obvious joint ($\leq 0.15\text{mm}$).

At the place of flooring, if there's the underfloor heating facilities, the heating system should have passed tests and could be used normally.

48 hours before the flooring, during the flooring, as well as 48 hours after the flooring, keep the space temperature and ground temperature consistent, and the best ground temperature should be within the range of 15 C-25 C. It's not allowed to carry out flooring work on the heating surface if the temperature is higher than 25

CLEANING AND MAINTENANCE:

7 days after the flooring is completed, please avoid the floor getting damp.

For daily cleaning, clear away the dusts and sand grains with a broom and then mop the floor. Please do not use too much water for washing. At public places, place a warning sign for safety.

Apply neutral detergent and mop with a damp-dry mop to clean the dirt on surface. Apply surface wax regularly to have surface maintenance, which could protect the floor effectively and make the floor glossy. Within 24 hours after application of the surface wax, do not walk on or have other activities on the floor, so as to avoid the damage to the results of wax.

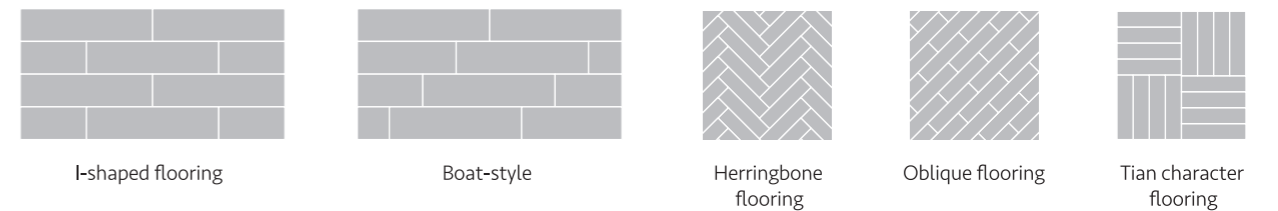
Place a ground mat at the entrance to remove grains from shoe sole, so as to reduce the damages to floor.

Conical contact surface may damage the floor. For example, use gaskets for the feet of furniture to protect the floor surface, for the purpose of a prolonged service life.

FLOORING SCHEME

WOOD GRAIN DECOR FLOORING PLAN

Wood grain decor can be used in I-shaped flooring, boat-style, herringbone flooring, oblique flooring, and Tian character flooring. The most commonly used ones are I-shaped flooring and boat-type flooring. When herringbone flooring and Tian character flooring are adopted, attention should be paid to the sewing process. When the flooring tolerance is too large at a certain position, it is necessary to reposition the gap.



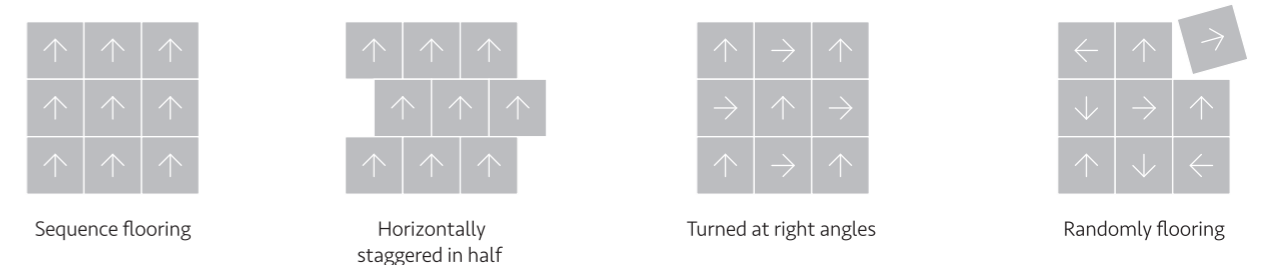
STONE PATTERN DECOR FLOORING PLAN

Stone decor can be floored in square (mosaic), brick laying and herringbone flooring. The most commonly used are square and brick laying. When square flooring and herringbone flooring are adopted, attention should be paid to the gapping process. When the flooring tolerance is too large at a certain position, it is necessary to reposition the gap.



CARPET PATTERN DECOR FLOORING SCHEME

The carpetdecor can be floored in sequence, turned at right angles, horizontally staggered in half, randomly, or floored according to a predetermined plan. When sequence flooring and turned at right angles flooring are adopted, and it is necessary to reposition the gap when the flooring tolerance is too large at a certain position, according to the actual situation.



PRIOR TO INSTALLATION

When installing Huali 61 Serie vinyl flooring, always follow current national standards for the installation of floor coverings. Best current installation practice, incorporating the latest technical developments should also be employed. The preparation of the subfloor, the installation of the floor covering and the measures taken to safeguard value are key factors in ensuring optimum suitability and performance of resilient floor coverings. On receipt of materials, check that the colours correspond to those ordered and that there is no damage or visual defects in the material. Check that the material is from one batch if that was requested. Claims for visual defects can only be accepted prior to installation and cutting.

CONDITIONING

Huali vinyl flooring must be protected against dirt and moisture during storage and both before and during the installation. The climatic conditions acceptable for the installation of Huali Loc vinyl flooring are:

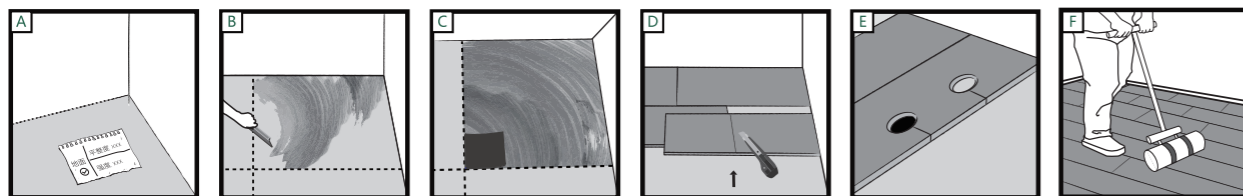
Residual moisture content:

- Floor temperature > 15°C
- Room temperature > 18°C
- Air relative humidity < 50–60%

Prior to installation, open the boxes and place them in the room they are to be installed in, together with the underlay, for a minimum of 48 hours BEFORE the installation commences, so the material can acclimatise. Boxes should never be stacked greater than 3 high. Ensure that the room temperatures are between 18 and 27°C during the conditioning period. Shuffle the planks/tiles to ensure a random appearance before installation.

Installation-LVT

grinder, blender, spikes, foam roller, trowel, measure tape, utility knife, rubber mallet, floor roller, etc. Adhesives, self-leveling cement and sub-flooring primer, Which are for LVT flooring use only.



A. Check temperature, humidity, the flatness, strength and moisture content of subfloor before installation.

B. Measure the room before installation. Divide it into 4 sections by drawing 2 perpendicular lines across the floor. Apply the adhesive when you are ready to install the flooring, starting from any section. Use the suitable trowel at an angle of 80 degrees to spread the adhesive and evenly.

C. Followed the adhesive instructions, once the adhesive is dry, start to place the

floorings from the center point of the room, and gradually to the whole room. Use the rubber mallet slightly to slap the flooring to make sure it's firmly bounded to the floor. Repeat it until the installation is completed.

D. The last piece close to the wall. To fit edge flooring that needs to be cut, lay it exactly over the last full flooring; place another full flooring against the wall and mark the cutting line where the flooring overlap. Cut the flooring in position.

E. Pipe or irregular pillar. Just make a cardboard template as a guide and use this to draw an outline onto the flooring. Cut to shape and check that it fits.

F. Any installation imperfection should be fixed within an hour after the floorings are installed. Once the floorings have been installed, use a 70kg floor roller to ensure the floorings are firmly bonded to the floor. Rolling should take place during the working time of the adhesive.

PREPARATION OF SUBFLOORS

Subfloors should be prepared as described in BS 8203/DIN 18365 or prevailing local/national standards. Huali Loc vinyl flooring can be installed over most hard subfloors, provided they are prepared in accordance with local standards. Subfloors must be hard, clean, and free from contamination, dry, durable, flat and sound. Solid subfloors must be tested in accordance to local standards to ensure they are not damp. Carpets and soft floorings are unsuitable as a base for the installation of Huali Loc vinyl flooring and will need to be removed prior to installation. Remove all debris and vacuum the whole subfloor area prior to commencing the installation.

Where underfloor heating is used, the maximum temperature on the surface of the flooring must never exceed 27°C. Subfloors should be tested for moisture in accordance with local standards. Solid subfloors should demonstrate a maximum damp content of 75%RH before the installation can begin.

Residual moisture content:

- Cement screed max. = 2.0 CM %
- With underfloor heating = 1.8 CM %
- Anhydrite floor max. = 0.5 CM %
- With underfloor heating = 0.3 CM %

Remove any unevenness in the subfloor prior to installation. Subfloor levels should be in accordance with local/national standards and in any event, should never exceed a maximum deviation of 5mm when measured under a 3m long straight edge. High spots and ridges should be removed to prevent damaging the locking mechanism of the planks/tiles. Please note that while the Vinyl Loc Underlay will mitigate against minor undulations in the subfloor, it should not be used in place of a proprietary levelling compound.

FLOORCARE AND INSTALLATION

We want your Huali floor to look it's best for many years to come and to help you achieve this we have laid out the following floorcare guidelines. Huali does not harbour dust mites or bacteria making it ideal for the home environment.

Initial cleaning after your new floor has been installed:

- Avoid walking on the floor for at least 24 hours following completion of installation.
- Sweep or vacuum to prevent loose dirt or grit from scratching the floor.
- Polishing your floor can be beneficial to help prevent slight surface scratches and to provide further protection.

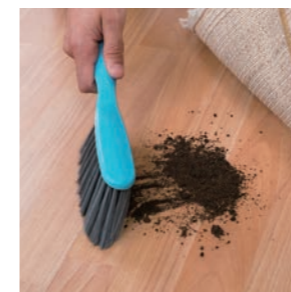
Day to day cleaning:

- Sweep or vacuum the floor to remove loose dirt, grit or dust.
- Use clean mops and neutral cleaning solutions to regularly clean your floor. Contact Huali for details of approved maintenance products.
- Dilute the floor cleanser to the manufacturer's instructions.
- Mop the floor evenly.
- Collect any excess liquid in a mop bucket.
- Rinse the floor with clean water and allow to dry.

Regular cleaning is more beneficial to the floorcovering and is more cost effective than occasional heavy cleaning.

- Do:**
- ✓ Install barrier mats at entrances to pick up grit and moisture. (Please note, some rubber-backed mats may discolour the floor)
 - ✓ Ensure your furniture is fitted with protective pads where necessary to prevent scratches.
 - ✓ Use protective cups under heavy furniture to prevent indentation.
 - ✓ Remove spillages as quickly as possible to reduce risk of staining and causing slip hazards.
 - ✓ Always use clean equipment when maintaining your floor.
 - ✓ Regularly trim pets claws as these can cause fine scratches.

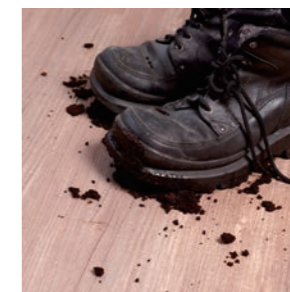
- Don't:**
- ✗ Use abrasive liquids or metal scouring pads as these can damage the floor.
 - ✗ Clean the floor with solvents, caustic detergents, washing up liquids, soap powders, bleach, furniture polishes, petroleum based products, pine gels, stain removers or highly coloured products. Such products may make the floor slippery or cause permanent damage.
 - ✗ Drag furniture with unprotected feet across the floor.



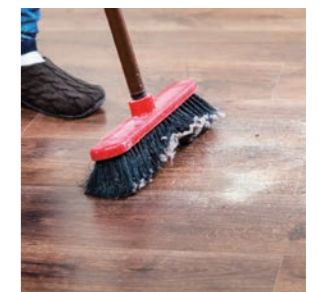
Huali flooring is resistant to everyday dirt and soil



Huali flooring is resistant to accidental splashes and temporary surface water



Dirty footprints are not a problem and can be easily wiped away



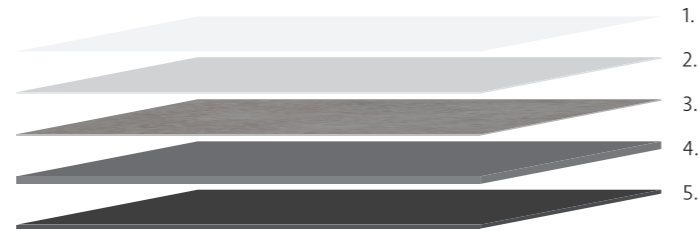
Everyday dirt and crumbs can be simply swept away

TECHNICAL DETAILS

Huali floor is a top quality vinyl flooring in tile and plank formats. Each layer has been thermally pressed by means of innovative technologies for ultimate performance.

HUALI Luxury Vinyl Tile ^{LVT}

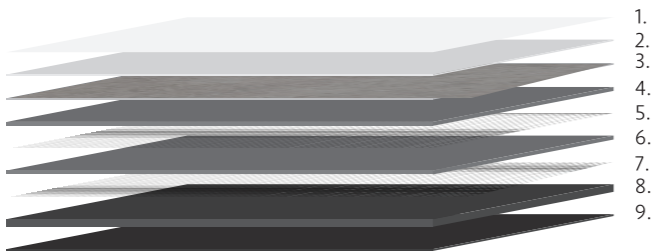
1. **PUR surface treatment**
Easier care and less cleaning thanks to a factory applied PUR surface treatment.
2. **Wear layer**
This transparent, extremely dense layer is hard-wearing and protects the decoration of the product. This allows the surface embossing to create a highly authentic effect.
3. **Film layer**
The designs have been exclusively developed for wood and embossed on to the film layer using innovative printing technology.
4. **Stabilized substrate**
Improved dimensional stability by minimising changes caused by physical effects.
5. **Base layer**
The basis for the long service life and high performance of Hualiflor.



15 Years Product Guarantee

The Reflections Dryback of luxury vinyl tiles has been developed to meet the highest technical specification of its product type. Ideal for all areas of the home, the products ensure high performance and optimum style. In addition, Reflections Dryback is suitable for moderate commercial applications such as light traffic areas within hotels, conference rooms and small offices.

HUALI Luxury Vinyl Tile Loose Lay ^{LVT}



1. **PUR surface treatment**
Easier care and less cleaning thanks to a factory applied PUR surface treatment.
2. **Wear layer**
This transparent, extremely dense layer is hard-wearing and protects the decoration of the product. This allows the surface embossing to create a highly authentic effect.
3. **Film layer**
The designs have been exclusively developed for wood and embossed on to the film layer using innovative printing technology.
4. **Middle LVT Layer**
Contain micro-size stone and PVC particles, determining the physical and chemical properties of the product.
5. **Fiberglass Layer**
Between the LVT layers, keeping the dimensional stability, expansion and contraction of the product.
6. **Middle LVT Layer**
Contain micro-size stone and PVC particles, determining the physical and chemical properties of the product.
7. **Fiberglass Layer**
Between the LVT layers, keeping the dimensional stability, expansion and contraction of the product.
8. **Stabilization Layer**
Balance the inner stress, keeping the product flat and stable.
9. **Backing Layer**
Black PVC layer with anti-slip function.



15 Years Product Guarantee

Reflections 55 Loose-Lay flooring allows multiple installation and removal without damaging the substrate for effortless access to subfloor. Its specially designed backing ensures an enhanced adherence to the subfloor preventing the floor from sliding while allowing an easy installation. With the reinforced wear layer of 0,55mm PUR top layer Reflections 55 Loose-Lay flooring ensures long lasting durability and cleaning easiness at demanding commercial areas while demanding little maintenance over time thanks to wear layer protection.

ENVIRONMENT

Huali has for many years been recognised as a leading global manufacturer of high quality, high performance floorcoverings. We have demonstrated a high level of commitment and endeavour to minimise the impact of our products on the environment whilst maximising the performance benefits of our flooring throughout their entire life.

Huali flooring is 100% recyclable and eco-friendly. Along with low VOCs, energy efficient manufacturing, long life and low maintenance it is clear why Huali achieves BRE A+ rating for its LCA performance.

