

CONSTRUCTION	Tufting 1/10" saxony
STRUCTURE	Tufté 1/10" saxony
STRUKTUR	Getuftet 1/10" saxony
STRUCTUUR	Getuft 1/10" saxony
PILE MATERIAL	100% PA 6 IMPREL®
COMPOSITION DU VELOURS	
POLMATERIAL	
POOLMATERIAAL	
PRIMARY BACKING	Non woven PES
SUPPORT	Non tissé
TRÄGERMATERIAL	Vlies
TUFTDOEK	Felt
SECONDARY BACKING	Action Back
DOSSIER	
RÜCKEN	
TAPIJTRUG	
PILE WEIGHT	Ca. 900 gr/m ²
POIDS DU VELOURS	
POLEINSATZGEWICHT	
POOLGEWICHT	
TOTAL WEIGHT	Ca. 1.875 gr/m ²
POIDS TOTAL	
GESAMTGEWICHT	
TOTAAL GEWICHT	
PILE HEIGHT	Ca. 4 mm
EPAISSEUR DU VELOURS	
POLHÖHE	
POOLHOOGTE	
TOTAL HEIGHT	Ca. 7 mm
EPAISSEUR TOTAL	
GESAMTHÖHE	
TOTALE DIKTE	
TUFT DENSITY	Ca. 170 000/m ²
NOMBRES DE POINTS	
NOPPENZAHL	
AANTAL PUNTEN	
PILE DENSITY	Ca. 0.143 g/cm ³
DENSITÉ DU VELOURS	
POLROHDICHTE	
POOLDICHTHEID	
CLASSIFICATION	EN 1307
CLASSEMENT	32 - LC2
KLASSIFIKATION	
CLASSIFICATIE	
UPEC	U3 P3 E1 C0
	Certification CSTB:
	10/276-03
CASTOR CHAIR SUITABILITY	EN 985
CHAISE À ROULETTES	A: intensive use
STUHLROLLENEIGNUNG	
ROLSTOELGESCHIKTHEID	
STAIR SUITABILITY	EN 1963
ESCALIERS	A: intensive use
TREPPENEIGNUNG	
TRAPPENGESCHIKTHEID	

PERMANENTLY ANTISTATIC ISO 6356
 ANTISTATIQUE PERMANENT ≤ 2 kV
 PERMANENT ANTISTATISCH
 PERMANENT ANTISTATISCH

IMPACT NOISE RATING ISO 140-8
 ISOLATION PHONIQUE 24 dB ΔLw
 TRITTSCHALLVERBESSERUNG
 GELUIDSISOLATIE

SOUND ABSORPTION ISO 354
 ABSORPTION PHONIQUE 0.20 Cw
 SCHALLABSORPTIONSGRAD
 GELUIDSABSORPTIE

THERMAL RESISTANCE ISO 8302
 RÉSISTANCE THERMIQUE 0.15 m² K/W
 WÄRMEDURCHLASSWIDERSTAND
 WARMTEDOORLAATWEERSTAND

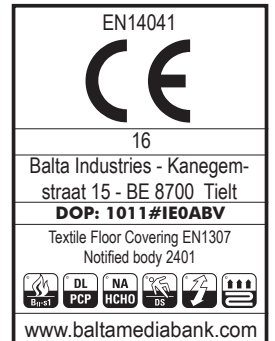
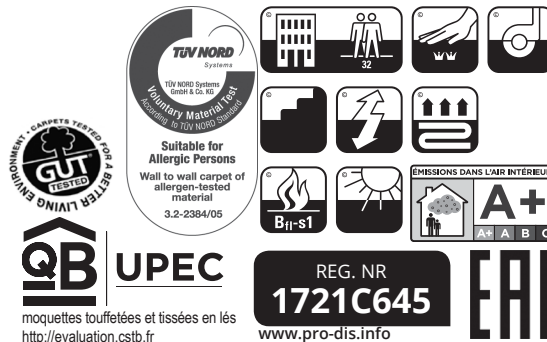
FASTNESS TO LIGHT ISO 105-B02
 SOLIDITÉ A LA LUMIÈRE ≥ 5-6
 LICHTECHTHEIT
 LICHTECHTHEID

COLOUR FASTNESS TO WATER EN ISO 105-E01
 SOLIDITÉ À L'EAU ≥ 4-5
 WASSERECHTHEIT
 WATERECHTHEID

FIRE RESISTANCE EN 13501-1
 COMPORTEMENT AU FEU Bfl-s1 (if glued)
 BRENNVERHALTEN
 BRANDGEDRAG

RUBBING FASTNESS EN ISO 105-X12
 SOLIDITÉ AU FROTTEMENT ≥ 4
 REIBECHTHEIT
 WRIJFECHTHEID

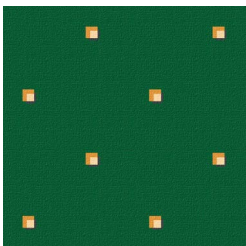
WIDTH EN ISO 3018
 LARGEUR ca. 400 cm
 BREITE
 BREEDTE



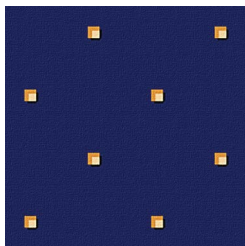


↔ 12 X ↓ 12 CM

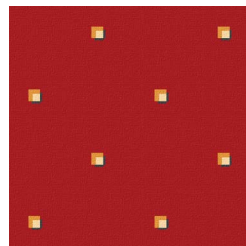
23



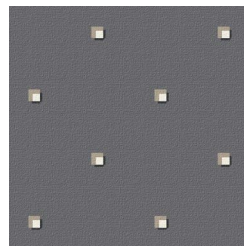
77



10



195



39

