

The indoor & outdoor solution for maximum freedom of design



EUROFLEX®

 approved fall height up to 3.0 m

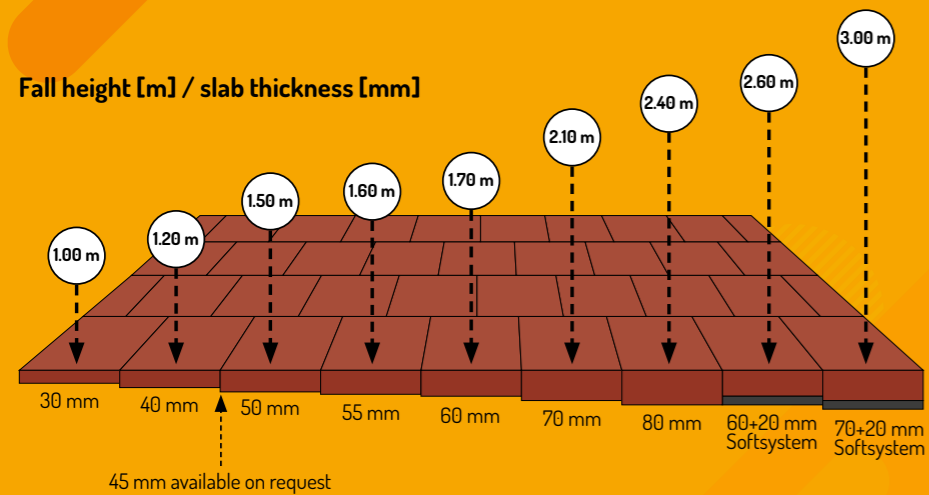
EUROFLEX® Visual System

Impact protection slabs with printed surface (page 4-17)



Visual System – with approved fall height for play areas

EUROFLEX® impact protection slabs have been proving their worth for many years thanks to their high impact protection values for children's playgrounds. Although our EPDM impact protection slabs and their various designs already offer numerous design possibilities, there are still limits. With our new EUROFLEX® Visual System you can now print individual designs with pixel precision – in virtually any shape and size! From motifs such as stones, lawns, wooden floors, sea and jungle to your own logos, corporate design colours or lines, everything is possible!

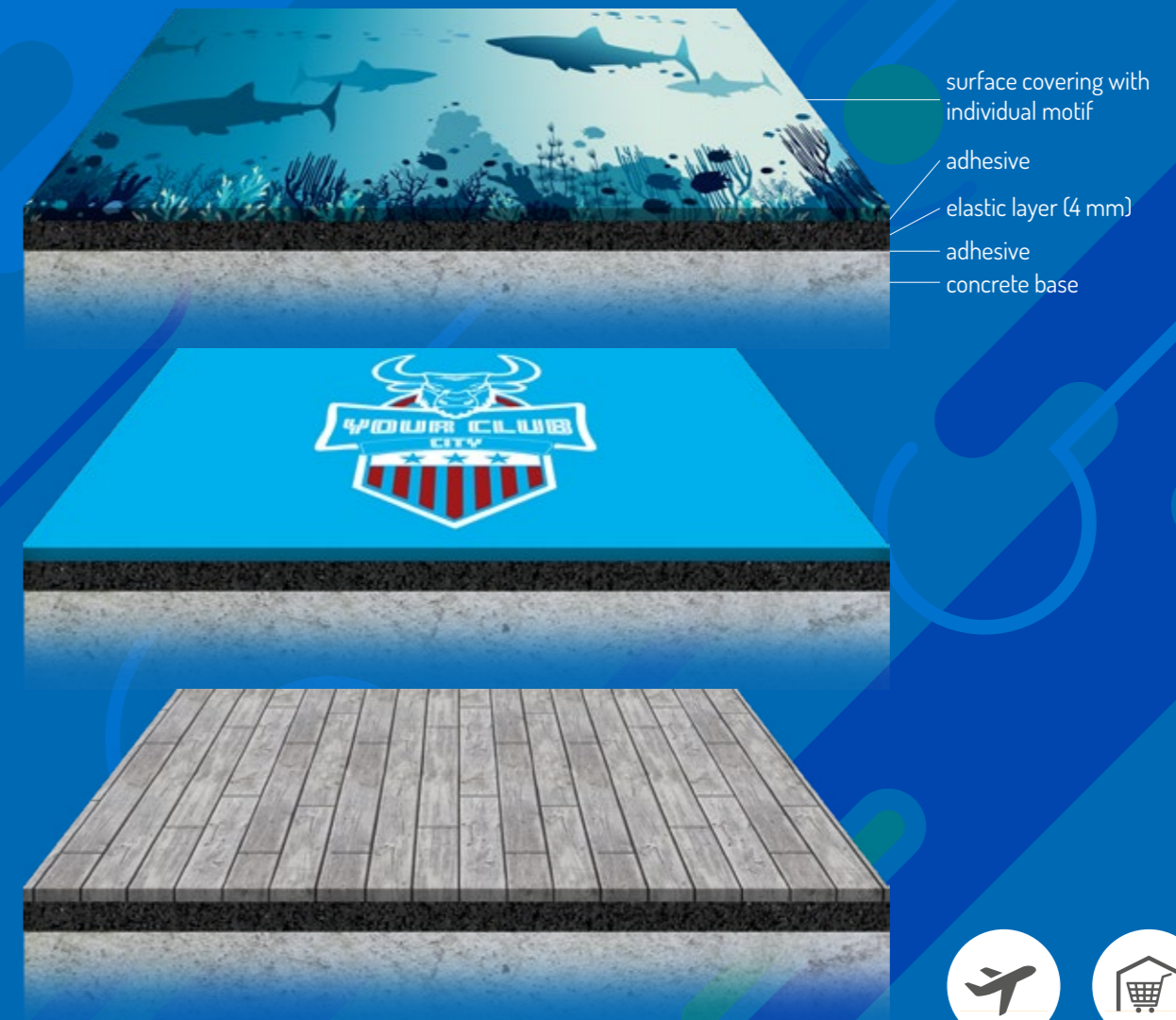


-  Airports
-  Shopping malls
-  Fairs
-  Climbing halls
-  Children's playgrounds
-  Kindergartens & schools

 Impact sound improvement: 20 dB

EUROFLEX® Visual System comfort

Elastic layer with printed surface (page 18-25)



Visual System comfort – sound reduction & walking comfort

EUROFLEX® Visual System comfort is used wherever there is no statutory impact protection requirement. EUROFLEX® Visual System comfort allows you to design and print your surface to pixel accuracy – in virtually any shape and size – just like the version with impact protection tiles.

-  Airports
-  Shopping malls
-  Fairs
-  Restaurants
-  Hotels
-  Offices

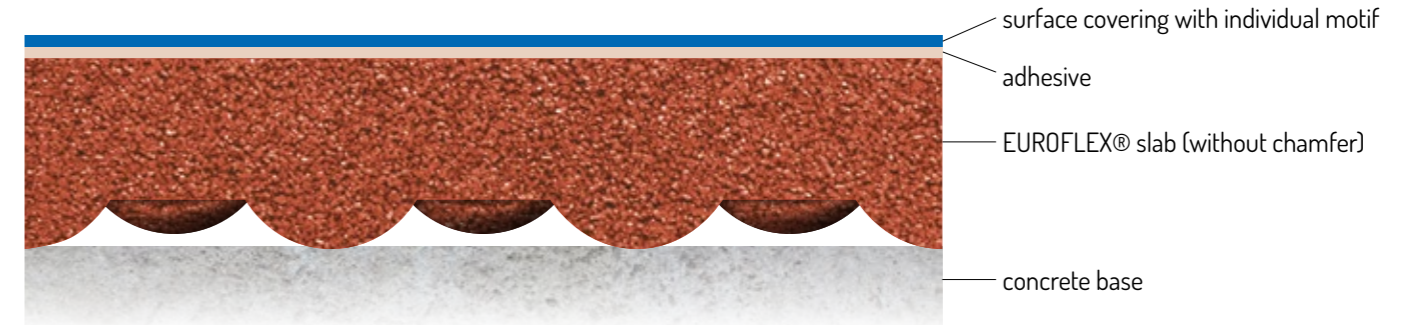


Impact protection slabs
with printed surface covering



Visual System – with approved fall height for play areas

EUROFLEX® impact protection slabs have been proving their worth for many years thanks to their high impact protection values for children's playgrounds. Although our EPDM impact protection slabs and their various designs already offer numerous design possibilities, there are still limits. With our new EUROFLEX® Visual System you can now print individual designs with pixel precision - in virtually any shape and size! From motifs such as stones, lawns, wooden floors, sea and jungle to your own logos, corporate design colours or lines, everything is possible!



FAQs regarding Visual System

Which impact protection slabs are suitable as substrate for the Visual System?

All SBR impact protection slabs of 30-80 mm or Softsystem can be used depending on the required fall height. The only difference is that the edges of the impact protection slabs are not chamfered when used under printed surface coverings. This makes it easier to create a completely smooth, jointless surface. The colour of the slabs does not matter as the surface is 100% opaque.

What material is the printed surface covering made of?

The surface covering is a 2.0 mm (outdoor) or 2.9 mm (indoor) thick vinyl floor. It is antistatic. It is standardly divided into 2.0/3.0 m wide strips (max. 4 m possible).

The surface is sealed ex factory which enables easy cleaning.

The product Visual System consisting of impact protection slabs and vinyl surface covering is offered and supplied as a complete system by KRAIBURG Relastec.

Which motifs can be printed?

In principle, any motif can be printed on the surface covering. However, a high resolution of the motif is decisive. Mobile phone shots or shots with cameras are usually not sufficient.

Especially for larger areas, professionally created textures or vector graphics are recommended, which can be scaled to any size without loss of quality.

What do I do if I cannot provide vector graphics for printing?

The following link will take you to an image database which offers an almost unlimited selection of images:
www.istockphoto.com

Filter by subject and select a maximum of ten images. Our highly qualified design team will use your selection to create a nice surface that is fully tailored to the customer's needs and will certainly attract attention.

What is the slip resistance of the surface?

The floor has achieved an excellent slip resistance value of R10 (tested according to DIN EN 16165).

Which fire protection class is achieved?

The system has achieved the best fire classification (Bfl-s1) for impact protection systems.

Where can the Visual System be used?

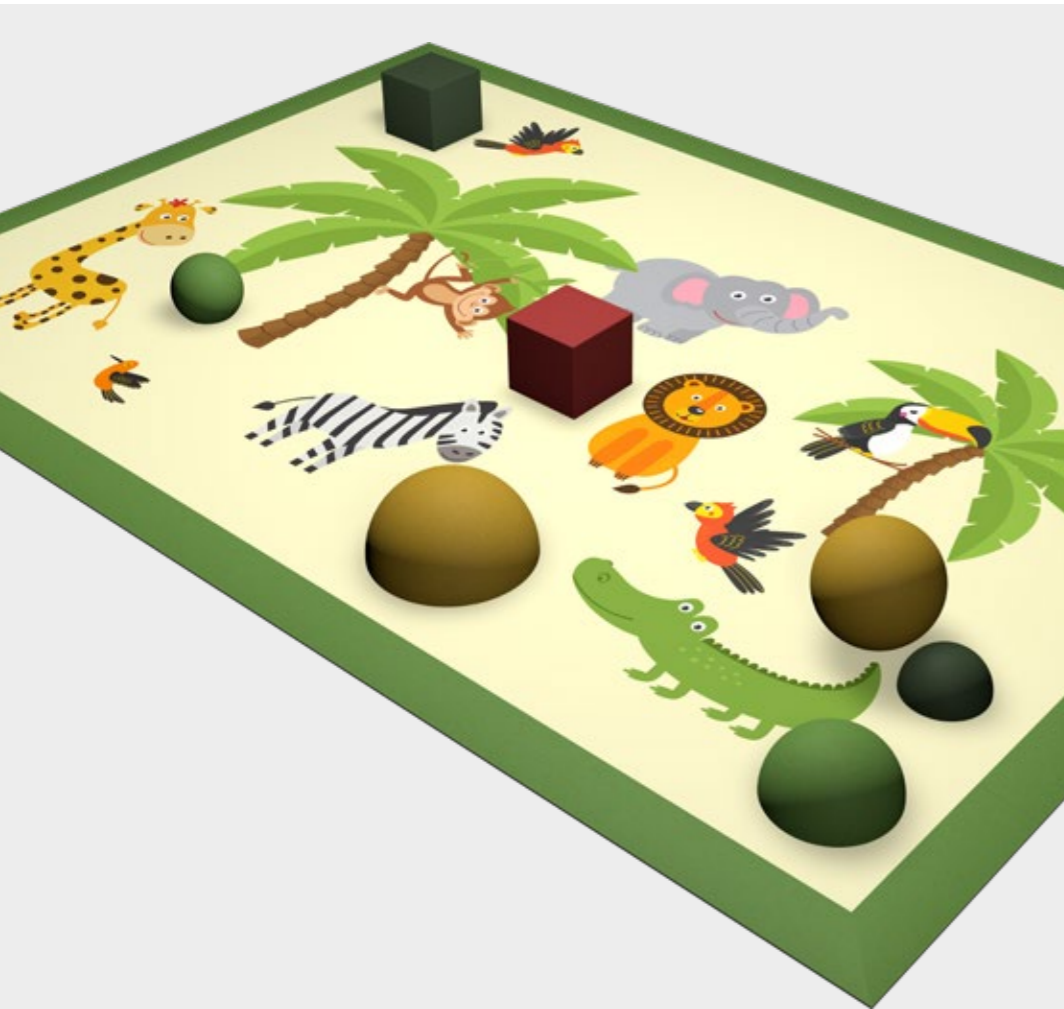
Indoor and outdoor use is possible.

Can Visual System be used multiple times?

Indoors, the floor can be fixed with double-sided adhesive tape and then reused. Outdoors, it must be glued and therefore cannot be reused.

You can find a detailed installation instruction here:

www.kraiburg-relastec.com/euroflex/en/downloads



Impact protection slabs -
the ideal base for Visual System



Tested quality - that is our promise!

EUROFLEX® Impact Protection Slabs guarantee the highest safety standard on playgrounds - for the past 40 years. Impact protection slabs (without chamfer on the edges) provide the base for the Visual System.

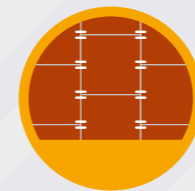
The use of shock-absorbent floor systems is necessitated by the requirements of DIN EN 1177:2018. This standard requires shock-absorbent flooring for a fall height of 60 cm or more. The suitability of Impact Protection Slabs made of bonded, permanently elastic recycled rubber granules is documented by a test certificate. The impact attenuation is demonstrated by means of the HIC method. All EUROFLEX® Impact Protection Slabs are tested in accordance with DIN EN 1177:2018 to determine the HIC value.



Tested Quality
ISO 9001 certified, Compliance with impact protection standards EN 1177:2018



Easy cleaning
due to a seamless surface



Integrated connector pins
for higher dimensional stability and prevention of accidental displacement



High elasticity & walking comfort
for cushioning shocks and falls



Great freedom for design
made possible by pixel-accurate, individual printing on the surface
edge- and corner profiles can be used, too



Impact sound insulation
for a calm room ambience



High anti-slip properties
R10 due to surface covering



Wide range of peripheral accessories
balls, half balls, diamond, cube, stepper, mushrooms, animals



Impact protection slab standard (without chamfered edges)

length / width	500 x 500 mm
other	pre-installed connector pins included

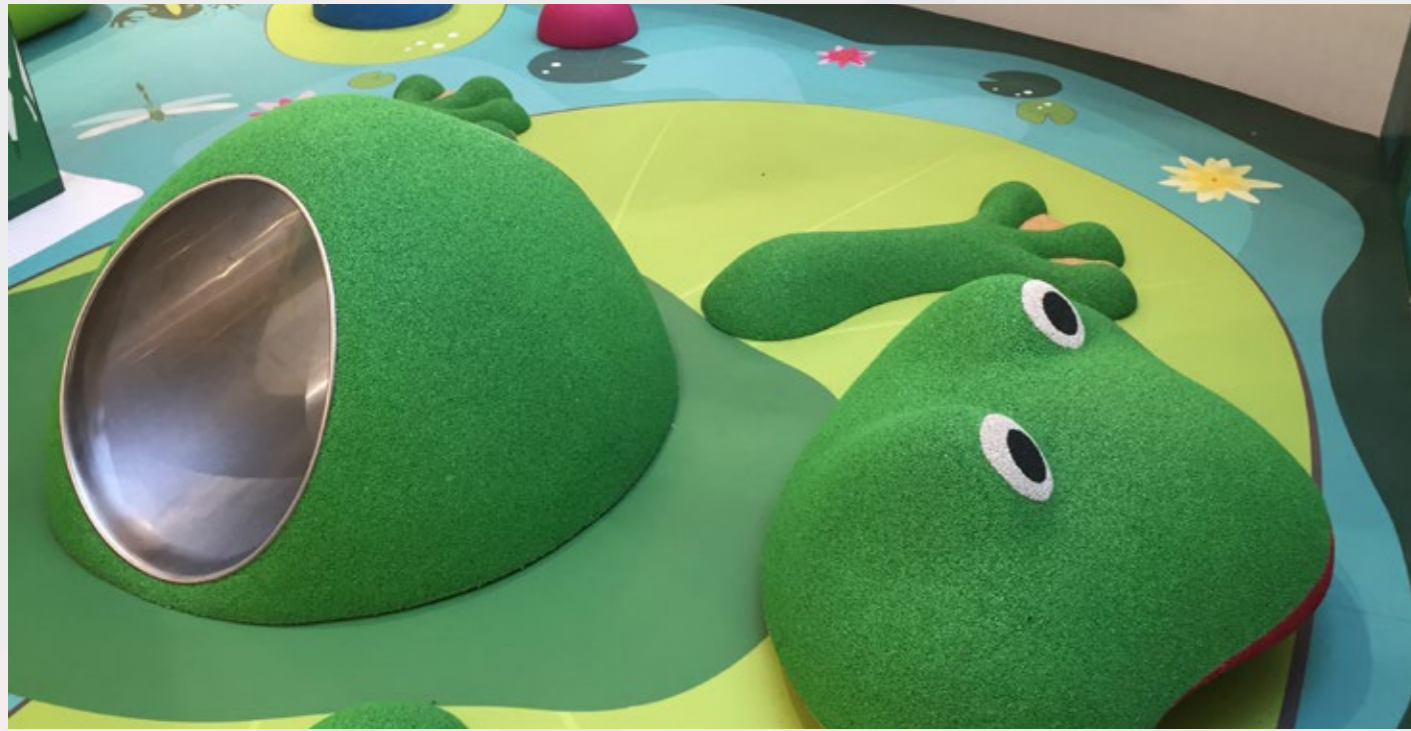


edge and corner profiles (also available with EPDM coating)

length / width	edge and corner profiles: 1,000 x 250 mm
heights	30/10, 40/10, 50/20, 70/20, 80/20, 90/20
colours	red



Accessibility
Thanks to our edge and corner profiles, all impact protection slabs can be installed barrier-free.



Woluwe Shopping Center, Brussels, Belgium (concept and realisation by Pro Urba)



Centre Manor Chavannes, Geneva, Switzerland (concept and realisation by Pro Urba)



Woluwe Shopping Center, Brussels, Belgium (concept and realisation by Pro Urba)



Centre Manor Chavannes, Geneva, Switzerland (concept and realisation by Pro Urba)



Hotel Grünauerhof, Salzburg, Austria



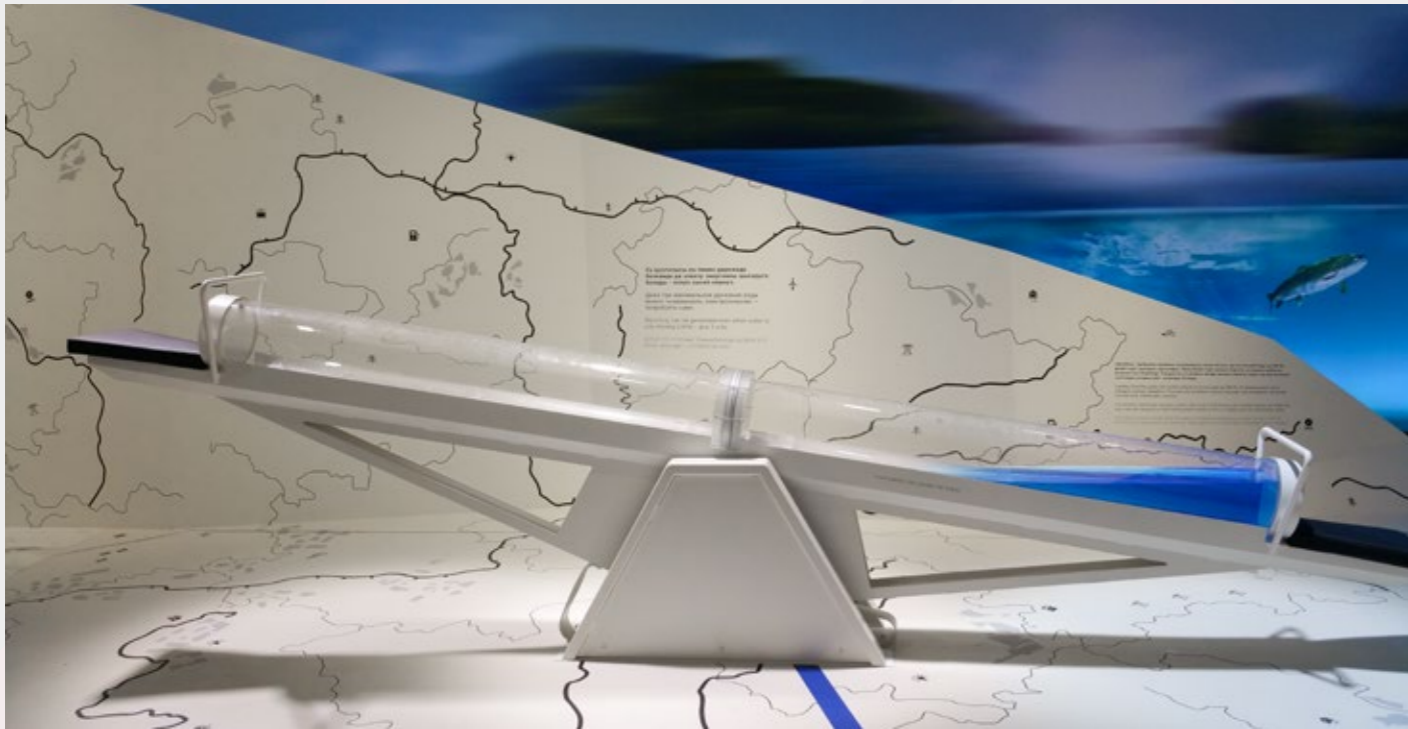
StadtPalais Stuttgart, Germany



Hotel Grünauerhof, Salzburg, Austria



StadtPalais Stuttgart, Germany



Visual System as exhibition floor, Astana, Kazakhstan



Moscow Shopping Centre, Russia



Visual System as exhibition floor, Astana, Kazakhstan



Moscow Shopping Centre, Russia

Outdoor Reference Projects

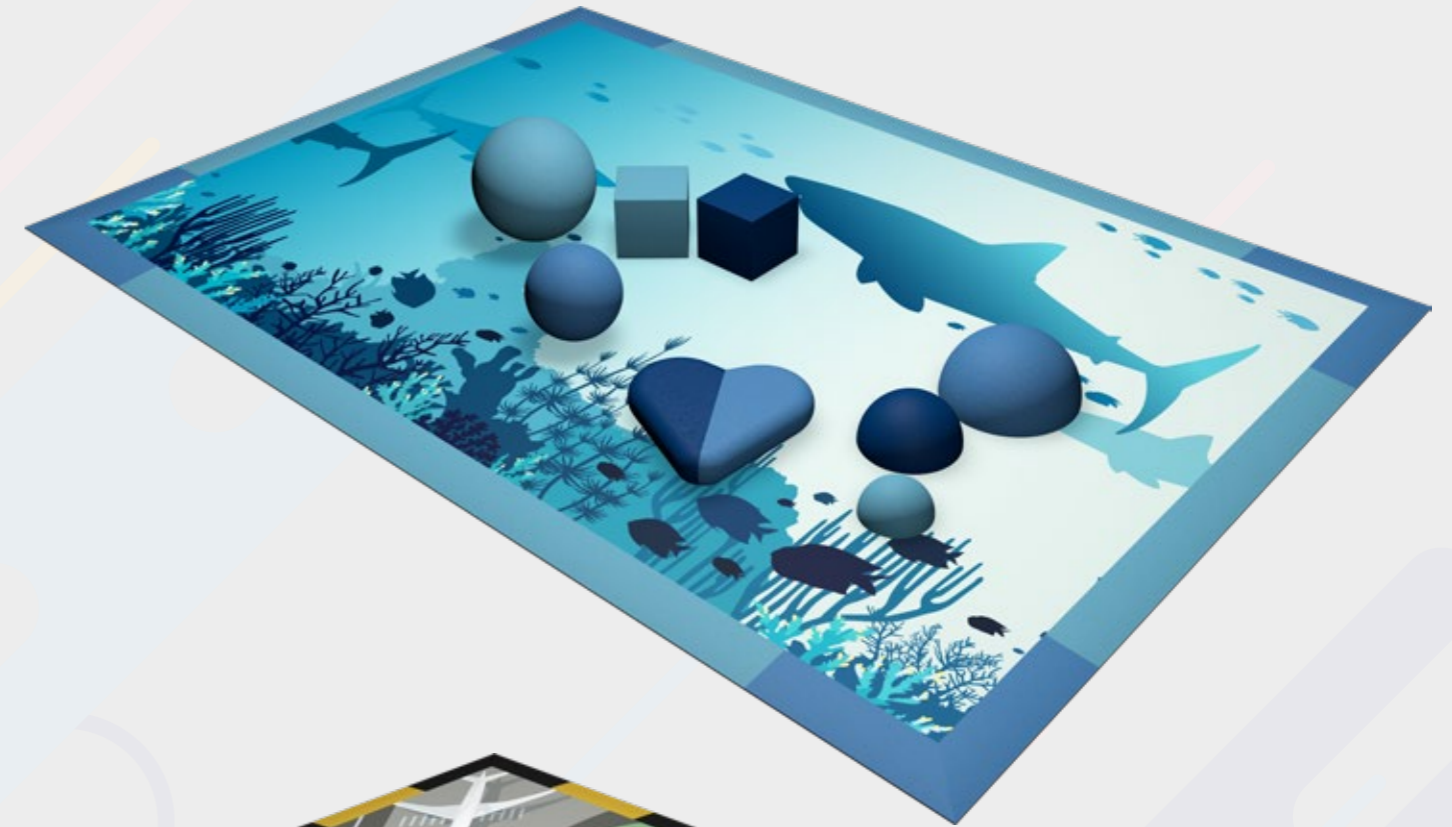


Lessingschule Salzwedel, Germany



Fairytale Park Salzwedel, Germany

Design ideas with EUROFLEX® (half) balls, cubes, hearts



Completely individual design with lines, logos, any shapes and colours



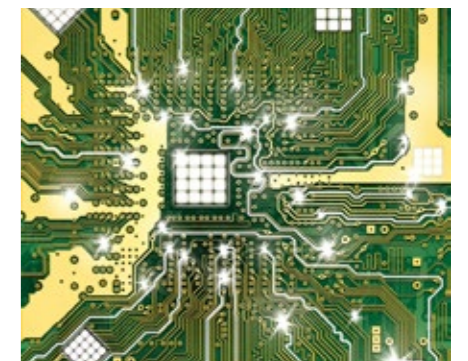
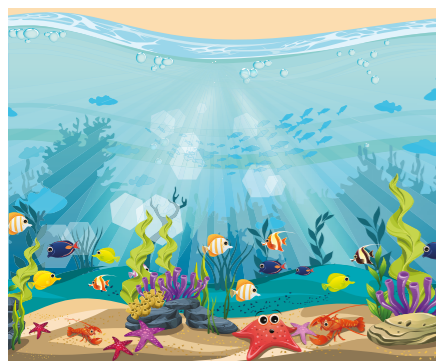
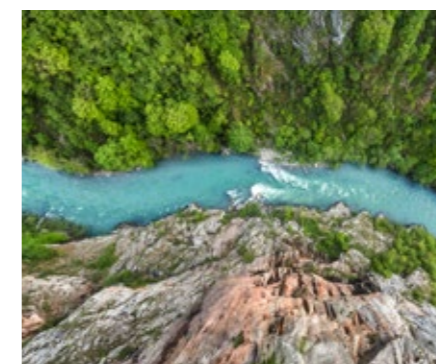
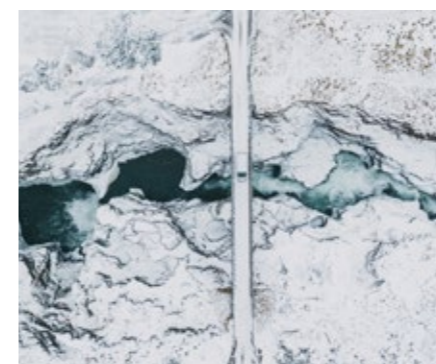
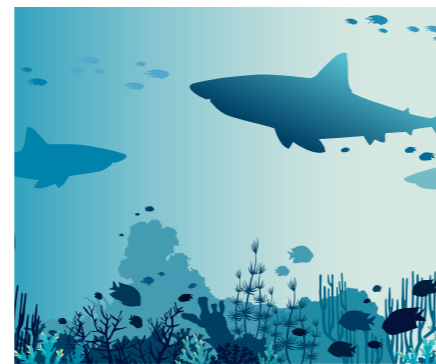
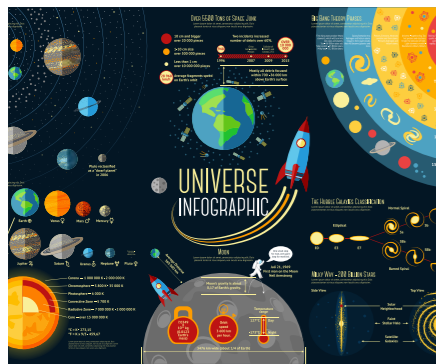
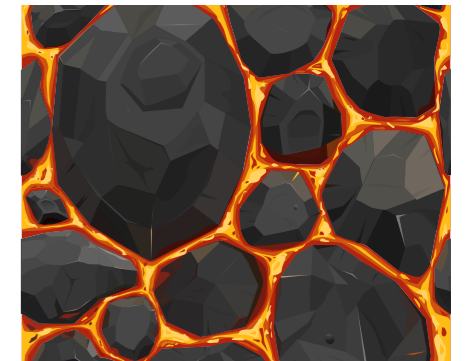
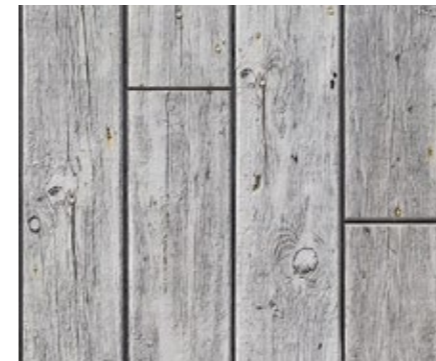
Textures

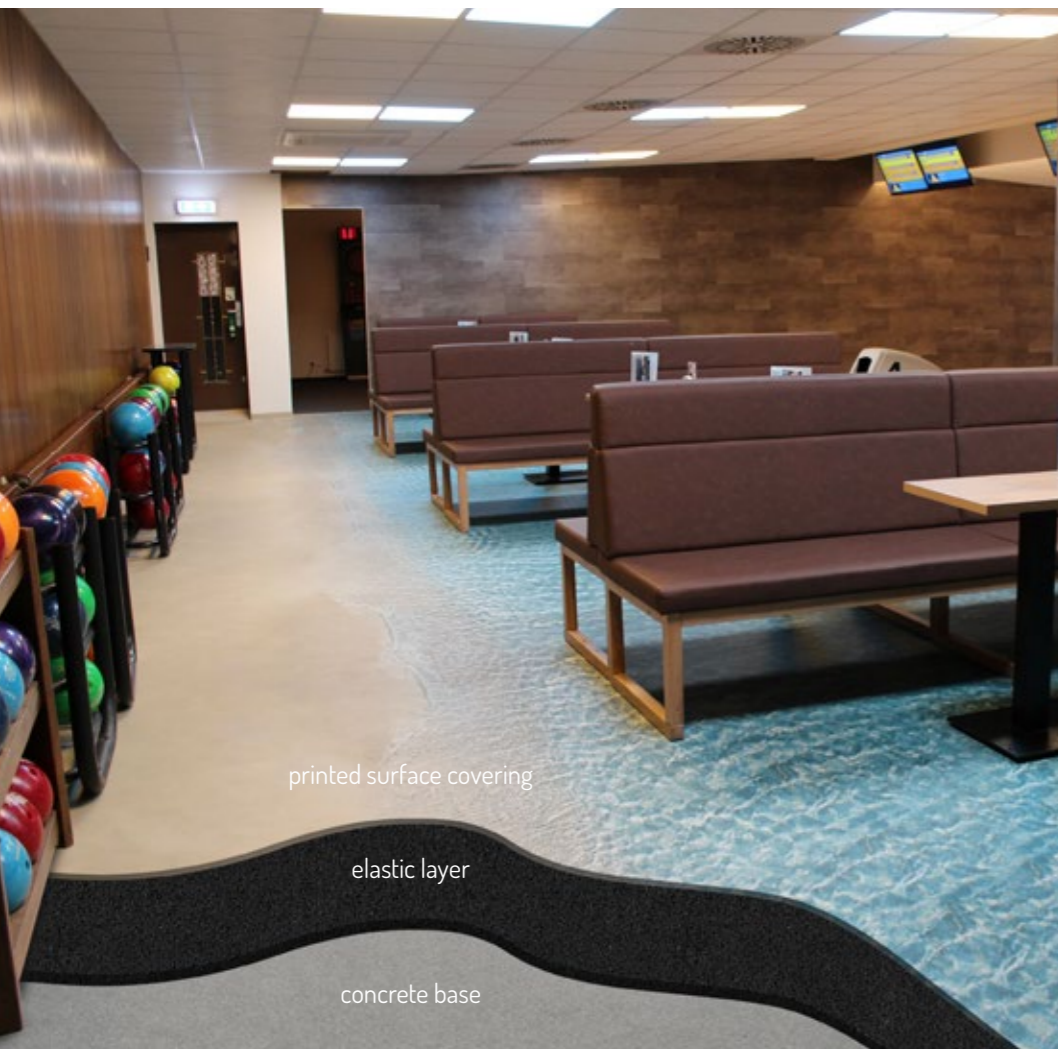


Motif collections (individual elements can be used as required)



Stockfotos / own photos





Elastic layer with printed surface covering



printed surface covering

elastic layer

concrete base

Visual System comfort – sound reduction & walking comfort

EUROFLEX® Visual System comfort is used wherever there is no statutory impact protection requirement. EUROFLEX® Visual System comfort allows you to design and print your surface to pixel accuracy – in virtually any shape and size – just like the version with impact protection tiles.

Visual System comfort structure



FAQs Visual System comfort

What material is the elastic layer made of?

The elastic layer is 4mm thick and consists of high-quality recycled rubber granulate. Due to the excellent material properties of this material, a **impact sound improvement of 20 dB** according to ISO 10140 is achieved for the entire system. In addition, the elastic layer ensures pleasant walking comfort. The elastic layer is delivered with the separate printed surface and has to be bonded together on site.

What material is the printed surface covering made of?

The surface covering is a 2.9 mm thick vinyl floor. It is anti-static. It is standardly divided into 2.0/3.0 m wide strips (max. 4 m possible).

The surface is sealed ex factory which enables easy cleaning.

The product Visual System comfort consisting of an elastic layer and vinyl surface covering is offered and supplied as a complete system by KRAIBURG Relastec.

Which motifs can be printed?

In principle, any motif can be printed on the vinyl surface layer. However, a high resolution of the motif is required. Mobile phone shots or shots with cameras are usually not sufficient. Especially for larger areas, professionally created textures or vector graphics are recommended, which can be scaled to any size without loss of quality. We have numerous motif suggestions available. You can also select motifs from an image database. We will be happy to send you detailed print data requirements upon request.

What do I do if I cannot provide vector graphics for printing?

The following link will take you to an image database which offers an almost unlimited selection of images:

www.istockphoto.com

Filter by subject and select a maximum of ten images. Our highly qualified design team will use your selection to create a nice surface that is fully tailored to the customer's needs and will certainly attract attention.

What is the slip resistance of the surface?

The floor has achieved an excellent slip resistance value of R10 (tested according to DIN EN 16165).

Which fire protection class is achieved?

The system has achieved the best fire classification (C_{fl}-s1) for acoustic insulation systems.

Is it possible to install the system in an outdoor area?

Usage in outdoor areas is not possible.

Can Visual System comfort be used multiple times?

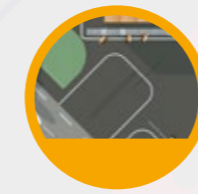
Yes! The floor can be used as a temporary flooring solution – for instance on fairs – by fixating it with double-sided tape. In this way, the floor can be reused later in another place.

You can find a detailed installation instruction here:

www.kraiburg-relastec.com/euroflex/en/downloads



Advantages of Visual System comfort



Great freedom for design
made possible by pixel-accurate, individual printing on the surface



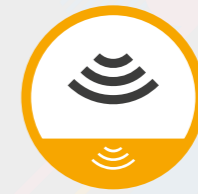
Easy cleaning
due to a seamless surface



High elasticity & walking comfort
for cushioning shocks and falls



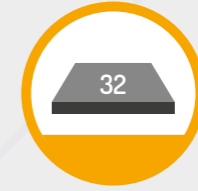
High walking comfort
due to elastic layer



Impact sound improvement
-20 dB for a calm room ambience



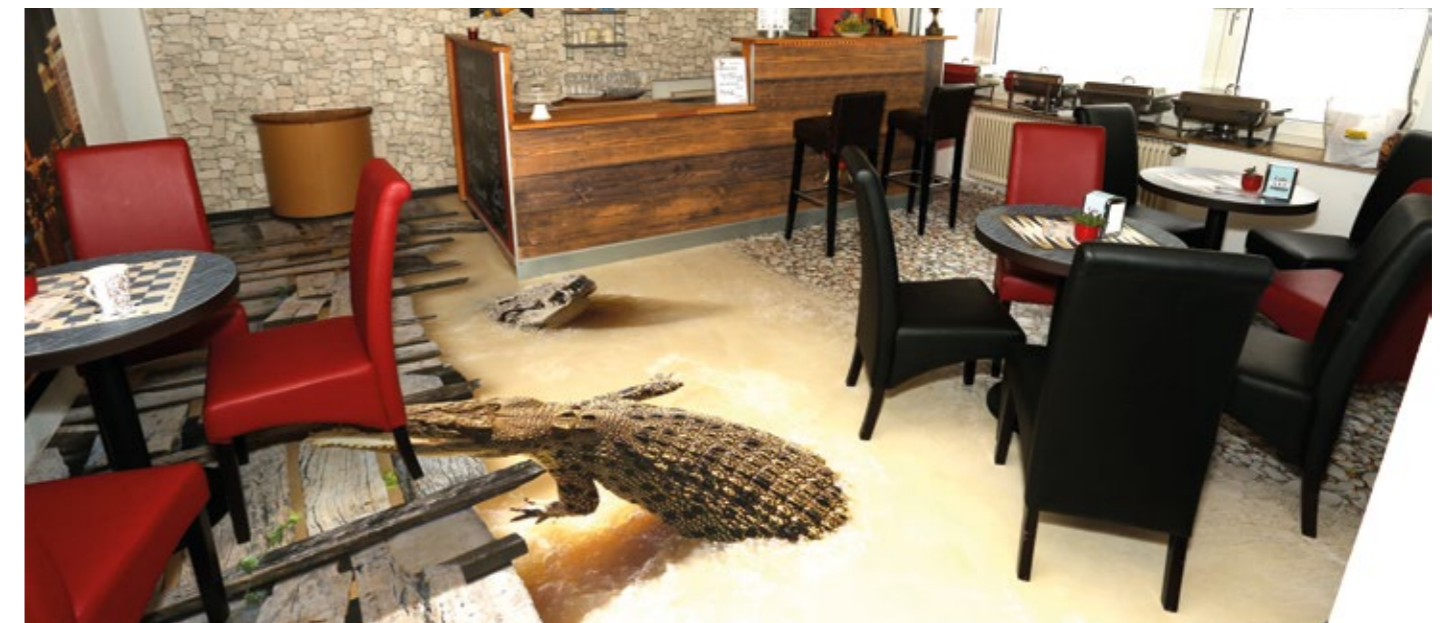
High anti-slip properties
R10 due to surface covering



Service class 32
for commercial buildings with medium stress



Low net weight
only 1.95 kg/m²



Extensively tested system

EUROFLEX® Visual System comfort is the ideal system for shop areas, exhibition stands or other areas where creative flooring is required. The high fire protection class, high slip resistance and excellent impact sound improvement of 20 dB are ideal properties for commercial areas.





ENVIRONMENTAL MANAGEMENT AT KRAIBURG RELASTEC



Recycling of 85.000t old tyres

Every year, we process and recycle about 85,000 tons of old tyres, closed-cell rubber and rubber production scrap.



Fully recyclable products

All products are fully recyclable and are returned to the production process without any loss of quality.



CO₂ savings

In Germany alone, 400,000 tonnes of CO₂ can be saved annually by using used tyre granulates instead of new rubber materials.



Environmentally friendly production

We invest in innovative and environmentally friendly production methods and technologies. There is a PV system on our administration building.



Control of suppliers

Our suppliers are subject to constant monitoring with regard to environmental protection.



Environmentally friendly way of working

All employees of KRAIBURG Relastec undertake to implement sustainable practices in their daily work and to protect the environment wherever they can.



Review of the products and further development

Our products are subject to continuous quality testing and further development, whereby environmental concerns are given priority. We are always on the lookout for even more environmentally friendly alternatives that enable us to further reduce emissions and protect resources.



Environmental protection as a main strategic task

We are convinced that sustainable growth is only achievable, if we meet our responsibilities towards the environment. KRAIBURG Relastec has therefore adopted a very simple policy: Protecting the environment is part and parcel of what we do every day!



Member of NEW LIFE initiative

The declared aim of NEW LIFE is to demonstrate the advantages of recycled products from End-of-Life Tires (ELT) to the media, politicians and the general public and to motivate them to act sustainably.

More information:
www.initiative-new-life.de/en



Production loading address

KRAIBURG Relastec GmbH & Co. KG
Fuchsberger Straße 4
D-29410 Salzwedel

Sales office & marketing

KRAIBURG Relastec GmbH & Co. KG
Kehlsteinstraße 2
D-84529 Tittmoning



**IMPACT PROTECTION & PLAYGROUND ACCESSORIES
FOR PLAYGROUNDS AND MULTIPURPOSE SPORTS FACILITIES**

made from rubber granules

KRAIBURG Relastec GmbH & Co.KG
Fuchsberger Straße 4 · D-29410 Salzwedel

Sales:

Tel. +49 (0) 8683 701 -145 or -199

Fax +49 (0) 8683 701 -4145 or -4199

euroflex@kraiburg-relastec.com

www.kraiburg-relastec.com/euroflex/en

All rights reserved, all indications without engagement, subject to modifications.
© KRAIBURG Relastec GmbH & Co. KG 2022

